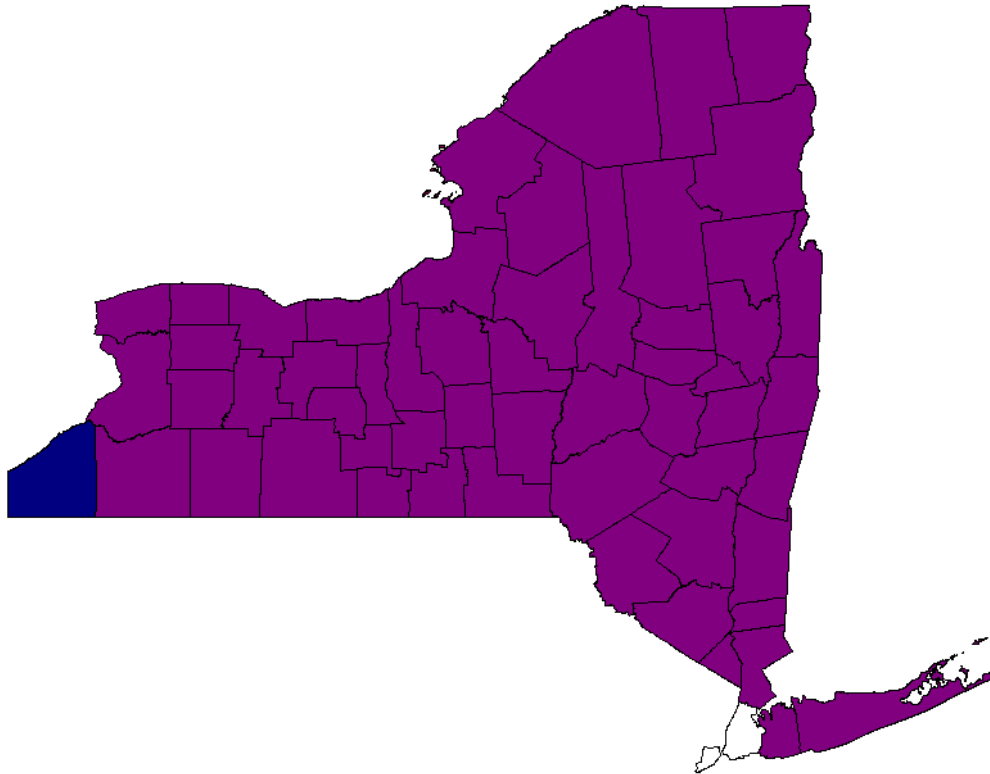




**PREVENTION RISK INDICATOR
SERVICES MONITORING SYSTEM
FOR ALCOHOL AND SUBSTANCE ABUSE**

**2005 RISK PROFILE FOR
CHAUTAUQUA COUNTY**



**New York State Office of Alcoholism and Substance Abuse Services
1450 Western Avenue ■ Albany, NY 12203-3526 ■ www.oasas.state.ny.us**

**George E. Pataki
Governor**

**Shari Noonan
Acting Commissioner**



2005 PRISMS County Risk Profiles

Welcome to the fifth edition of the OASAS County Risk Profiles. The NYS Office of Alcoholism and Substance Abuse Services (OASAS) has developed the PRISMS (Prevention Risk Indicator Services Monitoring System) Risk Profiles to assist New York counties and New York City in identifying youth chemical dependence risks and problems. The PRISMS County Profiles provide the 57 counties outside of New York City with information on risk factors for youth chemical dependence. These research-based risk factors, tested in earlier studies, have been found to predict youth chemical dependence problems at the county level.

What's In the 2005 PRISMS County Profiles:

The 2005 PRISMS Profiles present an additional two years of trend data for youth chemical dependence risk and consequences indicators, enabling counties to monitor changes at the indicator level over a nine-year time period. In 2003, the Profiles were enhanced and redesigned to better meet the needs of counties, prevention partnerships, planners and other county-wide organizations by providing trend graphs and tables for each indicator. The Risk Profiles also continue to offer summary information and relative comparisons to similar county and State norms for a given year through the Risk Constructs.

What's in the PRISMS County Risk Profiles:

A. Demographic Population Table:

The population table provides demographic data for each county. The rates in the County Profiles are calculated using the population denominators provided.

B. Risk Construct and Consequences Indices Scores:

The PRISMS Profiles provide counties with summary risk and consequences information on fifteen risk areas or “constructs” and two consequences indices. Using a research-based risk framework, the PRISMS Profiles group indicators into constructs through a statistical technique known as factor analysis. For example, indicators that measure violence (homicides, hospital diagnoses for intentional injuries, and violent crime arrests) are combined through factor analysis into the Violence Risk Construct. Consequences indicators are grouped through factor analysis into the Youth Alcohol Consequences Index, and the Youth Drug Consequences Index.

These construct and index scores are displayed in bar charts indicating each county's score compared to the NYS average score (represented by the NYS symbol on the bar chart). Each county receives a standardized construct score ranging from 0 (lowest risk) to 100 (highest risk) for each risk construct and consequences index. These scores detail a county's relative risk on a particular index or construct, such as violence, compared to all other counties for the year 2002. Unlike indicator rates, these construct and indices scores cannot be used to compare trends over time. The lowest risk and the highest risk score (the upper and lower parameters) change from one year to the next, based on the indicator rates that comprise each risk construct and



consequences index. Therefore, it would be inappropriate for a particular county to conclude that its risk for violence has decreased, in an *absolute* sense, should the county's violence risk construct score decrease from 45 in the 2003 Profiles to 36 in the 2005 Profiles. Rather, the county should conclude that, compared to other counties, its risk for violence decreased in *relative* terms. Such a relative decrease in violence risk could be the result of most counties experiencing an increase in violence, while this particular county's violence problem may have remained stable. Trends in the indicator rates that comprise the violence construct (homicides, hospital diagnoses for intentional injuries, and violent crime arrests), can clarify whether violence in a particular county is increasing or decreasing over time in absolute terms.

C. Indicator Rate Tables:

The indicator rate tables provide information on all youth chemical dependence risk and consequences indicators. The indicators are grouped according to their respective risk construct and index. Rates, unlike raw numbers, take the population of the county into account, so counties may easily compare their indicator rates with other counties, similar counties, and the NYS average rate. The individual indicator rates can help detail why a county ranked higher or lower on a given risk construct or index.

Community Risk Rate Table

Community-level or environmental risk factors that potentially impact all individuals living within the county are placed in the Community Risk rate table. Measures of community disorganization (urbanicity, economic, violence and crime), accessibility, and adult alcohol and drug exposure gauge the level of risk operating on the entire county's population. The Community Risk Rate Table can help estimate risk that can be addressed through universal, county-wide environmental prevention strategies such as media campaigns, public educational programs, multi-agency coordination and collaboration, and the modification of alcohol and tobacco advertising practices.

Youth Risk Rate Table

The Youth Risk rate table is comprised of risk factors reflecting youth whose family environments, behavior, or psychosocial development place them at higher risk for chemical dependence. Counties whose youth are experiencing intrapersonal and school problems, family dysfunction, and problem behaviors are at greater risk for chemical dependence. Selected and indicated prevention strategies such as prevention counseling, resistance skills training, parent skills education, and self-help groups for children of chemically dependent caregivers targeted to schools, peer groups, families, and individual youth can reduce youth chemical dependence risk.

Youth ASA Consequences Rate Table:

The Youth Consequences rate table provides counties with a measure of the chemical dependence problems that youth are currently experiencing in their counties. The youth consequences rate table is comprised of nine indicators that represent direct consequences for



youth (e.g., drug arrests, treatment admissions) resulting from their use or abuse of alcohol or other drugs. The Youth Consequences rate table may help estimate need for indicated prevention strategies, early intervention, and adolescent treatment.

D. Indicator Trends:

The 2005 County Risk Profiles provide indicator trend data for the years 1994 (from the first edition of the PRISMS County Profiles) through 2002 (the fifth edition of the Profiles). These trend data are displayed in easily interpreted graphs and tables, allowing counties to monitor changes in risk and consequences indicators over time. A graph is displayed for each risk and consequences indicator, showing both the county indicator rates and the NYS average rates over nine years. Trend graphs enable counties to document whether certain indicator rates are decreasing or increasing over time. The NYS average rate displayed in the indicator trend graphs and charts provides a “benchmark” for interpreting indicator rate changes.

A note of caution when interpreting the indicator trend tables and charts: indicator rates tend to be unstable and can “jump” from one year to the next, especially for counties with smaller populations. A large increase in an indicator rate may indicate a true increase in risk, but a rate increase may also reflect normal statistical variation from one year to the next. Rather than emphasizing rate changes from one year to the next, the overall trend during the 1994-2002 time period will provide more reliable information on the performance of a given indicator. An increase or decrease in rates may also reflect county resources or reporting systems, rather than an increase or decrease in a problem behavior. For example, youth DWI arrest rates may increase due to more youth drinking and driving, or to increased police surveillance. (Please refer to the “Limitations” section in the appendices for help in interpreting indicator data.) Changes in county resources, response to problems, and/or reporting that may affect indicators can best be understood at the county level. Investigating apparent changes in indicators may provide an opportunity for coordinating and improving prevention efforts.

E. Technical Notes:

The technical notes provide detailed definitions for each risk and consequences indicator in the PRISMS County Risk Profiles. The technical notes include additional information to facilitate interpretation of the indicator data, such as noting any changes to the indicator definitions over the seven-year time period. The population denominators on which the indicators are rated are also provided.

F. Appendices (Similar Counties, Limitations, OASAS Prevention Framework)

The appendices provide additional information to facilitate use and interpretation of the PRISMS Profiles, as well as information on OASAS Youth Prevention efforts.



The OASAS Prevention Framework

The OASAS prevention framework is based on the concept of risk and protection; certain risk factors increase the likelihood of chemical dependence problems, while protective factors safeguard against or reduce the effects of chemical dependence risk.

One risk and protection model adopted by OASAS and many other states is the Social Development model, developed by Hawkins, Catalano, and Miller at the University of Washington. The Social Development model hypothesizes that the formation of positive social bonds during childhood and adolescence protect against chemical dependence, and that risk factors operate by inhibiting the bonding processes. Chemical dependence risk and protective factors operate in many domains or areas, including the individual, family, peer group, school, and community. Since the Social Development model identifies causative risk factors that are amenable to change and prescribes prevention strategies based on domain-specific risk factors, this risk and protection model has been embraced by many in the prevention field.

New York State's chemical dependence prevention service delivery system consists of over 300 school and community-based prevention and early intervention service providers who work with individuals, families and organizations at multiple sites.

These programs provide a comprehensive range of research-based services, including classroom education, social skills development training, peer-led programs, parent and teacher training sessions, positive alternative activities, and individual, group and family counseling.



2005 County PRISMS Profiles Technical Notes

All indicator data in the PRISMS Profiles are expressed as a rate or percentage to allow for comparison across geographical areas. Unless otherwise noted, the County Profiles provide 1994 through 2002 data. Data in the Profiles are based on county of residence, except NYS Division of Criminal Justice Services arrest data (county of arrest) and NYS Education Department data (county of school). A “NYS Average” score is provided for each indicator. This is the average county score on the indicator for those counties outside NYC. For reasons of statistical methodology and due to differences in data availability, New York City is not included in the County PRISMS Profiles. A separate PRISMS Profile system is maintained for New York City

Community Risk Index

Urbanicity

Population Density. The number of persons per square mile. Population density is calculated by dividing population (2000 US Census County Population Estimates) by square mile of land area per county. Data are available for year 2000 only. *Source: 2000 US Census.*

Percent Urban. The percent of the total county population that resides in an urban area. The Census Bureau defines "urban" as consisting of territory, persons, and housing units in places of 2,500 or more persons incorporated as cities, villages, boroughs, and towns, but excluding the rural portions of "extended cities" and other territory, incorporated or unincorporated, included in urbanized areas. Data are available for year 2000 only. *Source: 2000 US Census.*

Violence

Violent Crime Arrests. The annual number of arrests for violent crimes rated per 10,000 total population. Violent crimes consist of the offenses of murder, non-negligent manslaughter, forcible rape, robbery, and aggravated assault. *Source: NYS Division of Criminal Justice Services, Bureau of Statistical Services, Uniform Crime Reports (UCR) Data.*

Hospital Diagnoses of Intentional Injury. The annual number of hospital discharges with the diagnosis of intentional injury or injury intent unknown (ICD-9 codes: E960-969 and E980-989) rated per 10,000 total population. *Source: NYS Department of Health Statewide Planning And Research Cooperative System (SPARCS) Data.*

Homicides. The annual number of homicides and deaths due to injury with intent unknown (ICD-9 codes: E960-969 and E980-989) rated per 10,000 total population. *Source: NYS Department of Health, Vital Statistics.*

Crime

Property Crime Arrests. The annual number of arrests for burglary, larceny and motor vehicle theft, rated per 10,000 total population. *Source: NYS Division of Criminal Justice Services, Bureau of Statistical Services, UCR Data.*



Other Arrests. The annual number of arrests for negligent manslaughter, arson, kidnapping, dangerous weapons, bribery, sex offenses (except forcible rape or prostitution), extortion, forgery and counterfeiting, promoting prostitution, prostitution, patronizing prostitution, buying receiving or possessing stolen property, coercion, criminal mischief (vandalism), fraud, gambling-bookmaking, gambling-numbers & lottery, gambling-other, offenses against public order, embezzlement, simple assault, offenses against family, unauthorized use of vehicle, possession of burglar's tools, disorderly conduct, loitering (vagrancy), all other offenses not included above, rated per 10,000 total population. *Source: NYS Division of Criminal Justice Services, Bureau of Statistical Services, UCR Data.*

Poverty/Economic

Percent Unemployment. The annual average number of unemployed civilians divided by the Labor Force, multiplied by 100. The unemployed are civilians who did not work during the week, made specific efforts to find a job within the previous four weeks, and were available for work during the week, except for temporary illness. The unemployed also includes those civilians who did not work at all, were available for work, and (a) were waiting to be called back to a job from which they had been laid off or (b) were waiting to report to a new wage or salary job within 30 days. *Source: NYS Department of Labor.*

Median Family Income. Median Family Income is defined as the income level at which 50% of families have incomes above and 50% of families have incomes below this level. Data are reported for the annual family income during the previous year. Data for years 1995-1999 are internal estimates from the New York State Department of Labor, and data for year 2000 are from the US Census. *Source: NYS Department of Labor, 2000 US Census.*

Children in Poverty. The number of children under 18 living in poverty, rated per 10,000 youth 0-17 years old. Data are available for year 2000 only. *Source: 2000 US Census.*

Couple-Headed Families in Poverty. The number of couple-headed families in poverty calculated as a proportion of all couple-headed families. Data are available for year 2000 only. *Source: 2000 US Census.*

Male-Headed Families in Poverty. The number of male-headed families in poverty calculated as a proportion of all male-headed families. Data are available for year 2000 only. *Source: 2000 US Census.*

Female-Headed Families in Poverty. The number of female-headed families in poverty calculated as a proportion of all female-headed families. Data are available for year 2000 only. *Source: 2000 US Census.*

Alcohol Accessibility

Adult Driving While Intoxicated (DWI) Arrests. The annual number of arrests of adults for driving while intoxicated (DWI) under the influence of alcohol, rated per 10,000 adults 21 and older. *Source: NYS Division of Criminal Justice Services, Bureau of Statistical Services, UCR Data.*

On-Premise Alcohol Outlets. The number of outlets with a current license to sell beer, wine or liquor to be consumed on premises, per 10,000 total population. *Source: NYS Liquor Authority, Division of Alcoholic Beverage Control.*



Off-Premise Liquor and Wine Outlets. The number of outlets with a current license to sell liquor and wine for off-premise consumption, rated per 10,000 total population. *Source: NYS Liquor Authority, Division of Alcoholic Beverage Control.*

Off-Premise Beer and Wine Cooler Outlets. The number of outlets with a current license to sell beer and wine coolers for off-premise consumption, rated per 10,000 total population. *Source: NYS Liquor Authority, Division of Alcoholic Beverage Control.*

Adult Alcohol Health/Treatment

Adult Alcohol-Related Deaths. The annual number of deaths of adults with any of the following diagnoses: alcoholic fatty liver, acute alcoholic hepatitis, alcoholic cirrhosis of the liver, alcoholic liver damage, unspecified, and cirrhosis of the liver without mention of alcohol (ICD-9 codes 265.2, 291, 303, 305, 425.5, 571.0-571.3, and 571.5) rated per 10,000 adults age 21 and older. *Source: NYS Department of Health, Vital Statistics.*

Adult Alcohol-Related Hospital Diagnoses. The annual number of hospital discharges of adults with any of the following diagnoses: alcoholic fatty liver, acute alcoholic hepatitis, alcoholic cirrhosis of the liver, alcoholic liver damage, unspecified, and cirrhosis of the liver without mention of alcohol (ICD-9 codes 265.2, 291, 303.0, 303.9, 305.0, 425.5, 571.0-571.3, and 571.5) rated per 10,000 adults age 21 and older. *Source: NYS Department of Health SPARCS Data.*

Adult OASAS Alcohol Treatment. The number of adults age 21 years old and older who were in treatment at some time during the year with alcohol as the only problem substance at admission, rated per 10,000 adults age 21 and older. *Source: NYS Office of Alcoholism and Substance Abuse Services (OASAS), Client Data System.*

Adult Probation - Alcohol

Adult Probation Cases: Use at Offense - Alcohol. The number of adults on probation for whom there was evidence of alcohol use at the time of offense, rated per 10,000 adults age 21 and older. *Source: NYS Division of Criminal Justice Services, Bureau of Statistical Services.*

Adult Probation Cases: Court Mandates - Alcohol. The number of adults on probation who were mandated by the courts to undergo alcohol testing, to abstain from using alcohol, or to enter treatment for alcohol, rated per 10,000 adults age 21 and older. *Source: NYS Division of Criminal Justice Services, Bureau of Statistical Services.*

Adult Drug Indications

Adult Drug Arrests. The annual number of arrests of adults for use, possession or sale of drugs, or public narcotic intoxication, rated per 10,000 adults age 21 and older. *Source: NYS Division of Criminal Justice Services, Bureau of Statistical Services, UCR Data.*

Adult DUI Drug Arrests. The annual number of arrests of adults for driving under the influence of drugs, rated per 10,000 adults age 21 and older. *Source: NYS Division of Criminal Justice Services, Bureau of Statistical Services, UCR Data.*



Adult Drug-Related Hospital Diagnoses. The annual number of hospital discharges of adults with any diagnosis related to drug use (ICD-9 codes 292.0-292.9 and 304.0-304.9 and 305.2-305.8) rated per 10,000 adults age 21 and older. *Source: NYS Department of Health SPARCS Data.*

Adult OASAS Drug Treatment. The number of adults aged 21 and older at admission who were in treatment at some time during the year with drugs other than alcohol as the only problem substance(s) at admission, rated per 10,000 adults age 21 and older. *Source: NYS OASAS, Client Data System.*

Adult Probation Cases: Use at Offense - Drugs. The number of adults on probation for whom there was evidence of drug use at the time of offense, rated per 10,000 adults age 21 and older. *Source: NYS Division of Criminal Justice Services, Bureau of Statistical Services.*

Adult Probation Cases: Court Mandates - Drugs. The number of adults on probation who were mandated by the courts to undergo drug testing, abstain from using drugs, or to enter treatment for drugs, per 10,000 adults age 21 and older. *Source: NYS Division of Criminal Justice Services, Bureau of Statistical Services.*

Adult Mental Health ASA Indications. The number of adults being served by the Office of Mental Health at the time of the OMH Patient Characteristics Survey with any of the following DSM-IV diagnoses or indications of substance abuse disability: Substance Abuse or Dependence (Alcohol or Other Drug), Alcohol-Related Organic Mental Disorder, Mentally Ill Chemical Abuser, or an alcohol or drug disability indicated, rated per 10,000 adults age 21 and older. The OMH Patient Characteristics Survey is conducted biannually in the fall during odd-numbered years. *Source: NYS Office of Mental Health, Patient Characteristics Survey.*

Youth Risk Index

Intrapersonal Problems

Emotionally Disturbed Students. The number of students in grades pre-K thru 12 with an inability to learn which cannot be explained by intellectual, sensory or health factors and who exhibits characteristics outlined in The Regulations of the Commissioner of Education, Subchapter P, Part 200-Students With Disabilities, Section 200.1 (mm) (4) i-iv. The term does not include socially maladjusted students unless it is determined that they are emotionally disturbed. Data on emotionally disturbed students are reported during the month of December. This number is rated per 10,000 youth, age 4-21. *Source: NYS Education Department.*

Youth ASA-Related Mental Health Diagnoses. The number of youth being served by the Office of Mental Health at the time of the OMH Patient Characteristics Survey with any of the following DSM-IV diagnoses: Conduct Disorder, Attention Deficit-Hyperactivity Disorder, Anxiety (Child), Schizophrenia/Schizophreniform/Schizoaffective disorders, Depression/Dysthymia, Bipolar Disorder, Personality and other Impulse disorders and Adjustment Disorder. This number is rated per 10,000 youth age 0-20. The OMH Patient Characteristics Survey is conducted biannually in the fall during odd-numbered years. *Source: NYS Office of Mental Health Patient Characteristics Survey.*



Family Dysfunction

Foster Care Admissions. The number of children under 18 years old admitted to foster care during the calendar year, rated per 10,000 youth age 0-17 years old. *Source: NYS Office of Children and Family Services*

Children in Foster Care. The number of children under 18 years old in foster care at the end of the calendar year, rated per 10,000 youth age 0-17 years old. *Source: NYS Office of Children and Family Services.*

Preventive Services Openings. The number of children under 18 years old with a Mandated Preventive Services case opened in the calendar year, rated per 10,000 youth age 0-17. Children with more than one case opened during the year are counted only once. Preventive services are defined as supportive and rehabilitative services provided to children and their families for the purpose of: averting a disruption of a family which will or could result in placement of a child in foster care; enabling a child who has been placed in foster care to return to his or her family at an earlier time than would otherwise be possible; or reducing the likelihood that a child who has been discharged from foster care would return to such care. *Source: NYS Office of Children and Family Services.*

Child Protective Services Indicated Cases. The number of child abuse/maltreatment reports that were accepted in the calendar year and indicated by March of the following year, rated per 10,000 youth age 0-17. *Source: NYS Office of Children and Family Services.*

Child Protective Services Mandated Reports. The number of child abuse/maltreatment reports received during the calendar year with a mandated reporter as the source of the report, rated per 10,000 youth age 0-17. *Source: NYS Office of Children and Family Services.*

Child Protective Services Total Reports Received. The number of child abuse/maltreatment reports received during the calendar year, rated per 10,000 youth age 0-17. *Source: NYS Office of Children and Family Services.*

Divorces. The annual number of dissolutions of marriage (divorce and annulment) rated per 10,000 total population. *Source: NYS Department of Health, Vital Statistics.*

School Conduct

Percent Average Daily Absenteeism. The percent average daily absenteeism is calculated by dividing the average daily absenteeism by the possible average daily public school attendance, multiplied by 100. *Source: NYS Education Department, Information, Reporting & Technology Services.*

Percent Students Suspended. The percent of enrolled public school students who received at least one day of out-of-school suspension during the previous school year. *Source: NYS Education Department, Information, Reporting & Technology Services.*

School Separation

Percent High School Dropouts. The annual percent of public students enrolled in grade 9-12 who left school prior to graduation for any reason except death and did not enter any other school, alternative high school equivalency program or other diploma program. Data are for



previous school year. *Source: NYS Education Department, Information, Reporting & Technology Services.*

Percent High School Graduates Not Attending College. The percent of public school students graduating high school who do not enter a four-year, two-year or other post-secondary institution the year after they graduate from High School. *Source: NYS Education Department, Information, Reporting & Technology Services.*

Problem Behavior - Delinquency

Youth Violent Crime Arrests. The annual number of arrests of youth age 10-20 for violent crimes, rated per 10,000 youth age 10-20. Violent crimes consist of the offenses of murder, non-negligent manslaughter, forcible rape, robbery, and aggravated assault. *Source: NYS Division of Criminal Justice Services, Bureau of Statistical Services, UCR Data.*

Youth Property Crime Arrests. The annual number of arrests of youth age 10-20 for property crimes, rated per 10,000 youth age 10-20. Property crimes consist of the offenses of burglary, larceny, and motor vehicle theft *Source: NYS Division of Criminal Justice Services, Bureau of Statistical Services, UCR Data.*

Youth Other Arrests. The annual number of arrests of youth age 10-20 for negligent manslaughter, arson, kidnapping, dangerous weapons, bribery, sex offenses (except forcible rape or prostitution), extortion, forgery and counterfeiting, promoting prostitution, prostitution, patronizing prostitution, buying receiving or possessing stolen property, coercion, criminal mischief (vandalism), fraud, gambling-bookmaking, gambling-numbers & lottery, gambling-other, offenses against public order, embezzlement, simple assault, offenses against family, unauthorized use of vehicle, possession of burglars tools, disorderly conduct, loitering (vagrancy), and all other offenses not included in property or violent crime arrests, rated per 10,000 youth age 10-20. *Source: NYS Division of Criminal Justice Services, Bureau of Statistical Services, UCR Data.*

PINS Cases Opened. The number of PINS (Persons In Need of Supervision) cases opened during the year, rated per 10,000 youth age 7-15. A person less than 16 years of age who does not attend school in violation of education law, or who is incorrigible, ungovernable or habitually disobedient and beyond the lawful control of parent or other lawful authority or who unlawfully possesses marijuana can be considered a Person In Need of Supervision (PINS). *Source: NYS Division of Criminal Justice Services, Bureau of Statistical Services.*

PINS Total Served. The total number of PINS (Persons In Need of Supervision) individuals served during the year, rated per 10,000 youth age 7-15. *Source: NYS Division of Criminal Justice Services, Bureau of Statistical Services.*

Youth in OCFS Custody. The number of youth in Office of Children and Family Services (OCFS) custody at the end of the year, rated per 10,000 youth age 7-20. The OCFS provides care and custody of court-adjudicated youth, as well as habilitation and treatment. *Source: NYS Office of Children and Family Services.*

Problem Behavior - Sexuality

Teenage Pregnancy. The annual number of youth pregnancies, rated per 10,000 females age 10-19. *Source: NYS Department of Health, Vital Statistics.*



Teenage Abortions. The annual number of youth induced abortions, rated per 10,000 females age 10-19. *Source: NYS Department of Health, Vital Statistics.*

Youth Hospital Diagnoses of STDs. The annual number of hospital discharges of youth with a diagnosis of sexually transmitted diseases, rated per 10,000 youth age 10-20. *Source: NYS Department of Health SPARCS Data.*

Youth Consequences Index

Alcohol Consequences

Youth Driving While Intoxicated Arrests. The annual number of youth age 16-20 arrested for driving while intoxicated, rated per 10,000 youth age 16-20. *Source: NYS Division of Criminal Justice Services, Bureau of Statistical Services, UCR Data.*

Youth Probation Cases: Use at Offense - Alcohol. The number of youth on probation for whom there was evidence of alcohol use at the time of offense, rated per 10,000 youth age 16-20. *Source: NYS Division of Criminal Justice Services, Bureau of Statistical Services.*

Youth Probation Cases: Court Mandates - Alcohol. The number of youth on probation who were mandated by the courts to undergo alcohol testing, to abstain from using alcohol, or to enter treatment for alcohol, rated per 10,000 youth age 16-20. *Source: NYS Division of Criminal Justice Services, Bureau of Statistical Services.*

Youth OASAS Alcohol Treatment. The number of youth age 12-20 who were in treatment at some time during the year with alcohol as the only problem substance at admission, rated per 10,000 youth age 12-20. *Source: NYS OASAS, Client Data System.*

Drug Consequences

Youth Drug Arrests. The annual number of arrests of youth age 10-20 for arrests for use, possession or sale of drugs, public narcotic intoxication or DUI, rated per 10,000 youth age 10-20. *Source: NYS Division of Criminal Justice Services, Bureau of Statistical Services, UCR Data.*

Youth Drug-Related Hospital Diagnoses. The annual number of hospital discharges of youth age 12-20 with a diagnosis related to drug use (ICD-9 Codes 292.0-292.9 and 304.0-304.9 and 305.2-305.8) rated per 10,000 youth age 10-20. *Source: NYS Department of Health SPARCS Data.*

Youth Probation Cases: Use at Offense - Drugs. The number of youth on probation for whom there was evidence of drug use at the time of offense, rated per 10,000 youth age 16-20. *Source: NYS Division of Criminal Justice Services, Bureau of Statistical Services.*

Youth Probation Cases: Court Mandates - Drugs. The number of youth on probation who were mandated by the courts to undergo drug testing, to abstain from using drugs, or to enter treatment for drugs, rated per 10,000 youth age 16-20. *Source: NYS Division of Criminal Justice Services, Bureau of Statistical Services.*



Youth OASAS Drug Treatment. The number of youth age 12-20 who were in treatment at some time during the year with drugs other than alcohol as the only probably substance(s) at admission, rated per 10,000 youth age 12-20. *Source: NYS OASAS, Client Data System.*



Similar Counties

The following Counties were grouped together based on cluster analyses of the PRISMS Risk Constructs and Consequences Indices. The 20035 Similar Counties are identical to the 2001 and 2003 Similar Counties in the PRISMS County Risk Profiles. Please note that the 1999 PRISMS Risk Profiles Similar Counties Groupings are unique to the 1999 PRISMS Profiles.

NYC Suburban	Nassau, Rockland, Westchester
Upstate Urban	Albany, Broome, Erie, Monroe, Niagara, Oneida, Onondaga, Rensselaer, Schenectady
Suburban	Dutchess, Ontario, Putnam, Saratoga, Suffolk, Tompkins
Rural	Allegany, Cayuga, Chenango, Delaware, Essex, Genesee, Greene, Hamilton, Herkimer, Jefferson, Lewis, Livingston, Madison, Orleans, Oswego, Otsego, St. Lawrence, Schoharie, Schuyler, Seneca, Tioga, Wayne, Wyoming, Yates
Rural Risk	Cattaraugus, Chautauqua, Chemung, Clinton, Columbia, Cortland, Franklin, Fulton, Montgomery, Steuben, Warren, Washington
Mid-Hudson Risk	Orange, Sullivan, Ulster

A. Demographic Population Table

CHAUTAUQUA COUNTY

The following population estimates are used in rating PRISMS indicators.

YEAR	Under 1	Under 5	Under 17	Under 21	4 thru 21	7 thru 15
1994	1,896	10,770	37,387	43,700	37,497	18,718
1995	1,838	10,700	37,395	43,632	37,565	18,826
1996	1,771	10,453	37,317	43,549	37,778	18,896
1997	1,687	10,035	36,802	43,078	37,580	18,925
1998	1,639	9,497	35,983	42,466	37,398	18,786
1999	1,632	9,090	35,414	41,953	37,106	18,715
2000	1,496	8,296	34,098	41,448	37,191	18,259
2001	1,496	8,296	34,098	41,448	37,191	18,259
2002	1,496	8,296	34,098	41,448	37,191	18,259

YEAR	7 thru 20	12 thru 20	16 thru 20	Female 10 thru 19	21 and Over	Total Population
1994	28,869	18,108	10,151	9,974	98,065	141,765
1995	28,885	18,054	10,059	9,938	97,333	140,965
1996	29,018	18,053	10,122	9,999	97,069	140,618
1997	29,075	18,036	10,150	9,963	96,295	139,373
1998	29,128	18,094	10,342	9,942	95,844	138,310
1999	29,132	18,105	10,417	9,953	95,478	137,431
2000	29,902	20,790	11,643	10,661	98,302	139,750
2001	29,902	20,790	11,643	10,661	98,302	139,750
2002	29,902	20,790	11,643	10,661	98,302	139,750

B. Risk Construct and Consequences Indices Scores

*** Community Risk Constructs..... B-2**

Community Disorganization

Community ASA Exposure

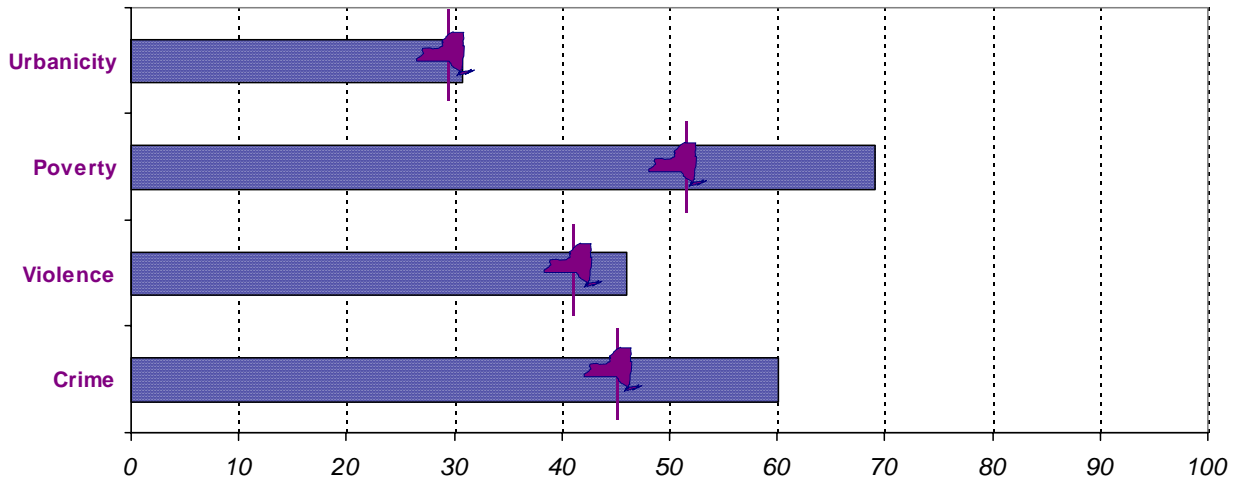
*** Youth Risk and Consequences Constructs..... B-3**

Youth Risk Constructs

Youth Consequences Constructs

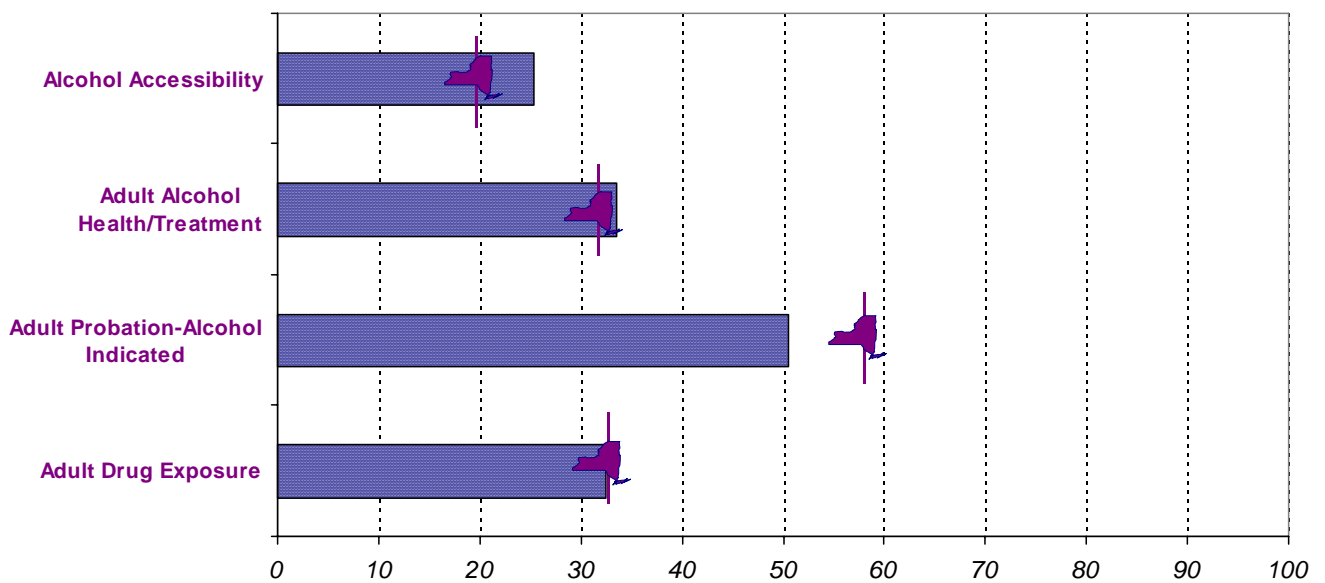
Community Risk Constructs

Community Disorganization



	Urbanicity	Poverty	Violence	Crime
CHAUTAUQUA	31	69	46	60
NYS Average	29	50	40	44

Community ASA Exposure

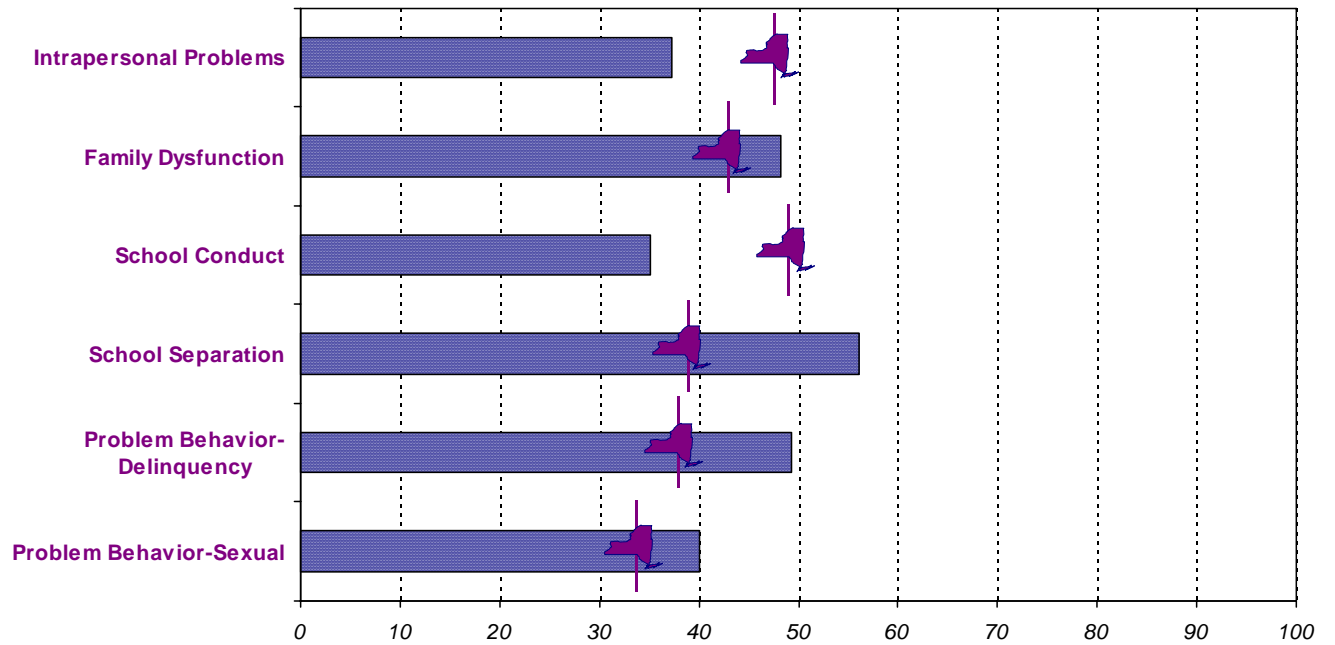


	Alcohol Accessibility	Alcohol Health/Treatment	Alcohol Probation	Adult Drug Exposure
CHAUTAUQUA	25	34	51	32
NYS Average	20	32	58	32



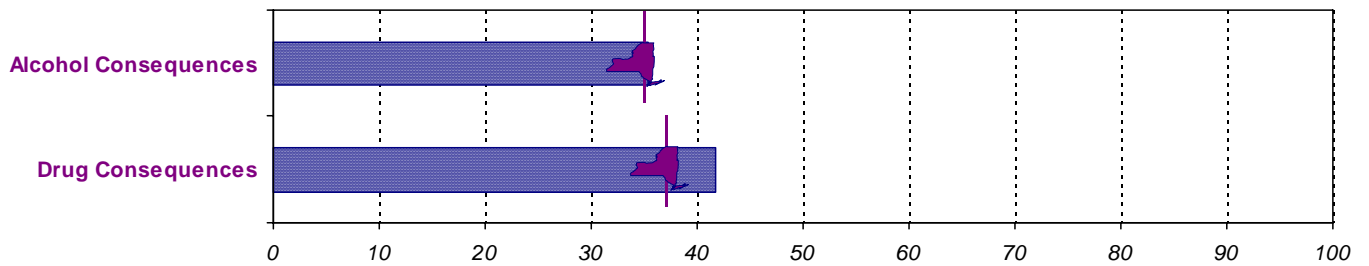
NYS Average = Average of county scores (excluding New York City)

Youth Risk Constructs



	Intrapersonal Problems	Family Dysfunction	School Conduct	School Separation	Problem Behavior - Delinquency	Problem Behavior - Sexual
CHAUTAUQUA	37	48	35	56	49	40
NYS Average	48	42	48	39	38	33

Youth Consequences Constructs



	Alcohol Consequences	Drug Consequences
CHAUTAUQUA	35	42
NYS Average	35	37



NYS Average = Average of county scores (excluding New York City)

C. Indicator Rate Tables

* 2000 Community Risk Indicators.....	C-2
* 2000 Youth Risk Indicators.....	C-3
* 2000 Youth ASA Consequences Indicators....	C-4

2002 Community Risk Indicators Rates

	CHAUTAUQUA COUNTY	Similar Counties Average	NYS Average*
<u>Community Disorganization</u>			
Urbanicity			
Population Density	131.6	97.8	350.9
Percent Urban	59%	50%	50%
Violence			
Violent Crime Arrests	14.0	13.7	15.3
Hospital Diagnoses of Intentional Injury	2.5	2.7	3.7
Homicides	0.6	0.4	0.4
Crime			
Property Crime Arrests	57.2	51.8	47.7
Other Arrests	326.4	304.1	186.6
Poverty/Economic			
Percent Unemployment	6.2	6.0	5.6
Children in Poverty **	1281.9	1124.3	816.0
Couple-Headed Families in Poverty**	457.0	444.8	324.9
Male-Headed Families in Poverty **	1706.0	1141.8	1141.8
Female-Headed Families in Poverty**	3260.6	2268.0	2268.0

** Data are available from US Decennial Census. No trend charts are provided.

ASA Exposure

Alcohol Accessibilty

Adult Driving While Intoxicated (DWI) Arrests	88.5	74.6	48.3
On-Premise Alcohol Outlet	17.8	18.0	15.0
Off-Premise Liquor and Wine Outlets	1.4	1.5	1.4
Off-Premise Beer and Wine Cooler Outlets	8.9	10.3	8.7

Adult Alcohol Health/Treatment

Adult Alcohol-Related Deaths	1.0	1.1	1.1
Adult Alcohol-Related Hospital Diagnoses	11.9	13.5	12.7
Adult OASAS Alcohol Treatment	58.4	58.2	46.5

Adult Probation - Alcohol

Adult Probation Cases: Use at Offense - Alcohol	38.6	12.9	33.1
Adult Probation Cases: Court Mandates - Alcohol	54.8	59.4	49.1

Adult Drug Indications

Adult Drug Arrests	48.2	46.7	40.6
Adult DUI Drug Arrests	0.9	1.7	2.1
Adult Drug-Related Hospital Diagnoses	40.7	36.6	45.0
Adult OASAS Drug Treatment	10.7	14.8	33.9
Adult Probation Cases: Use at Offense -Drugs	12.8	12.9	8.7
Adult Probation Cases: Court Mandates - Drugs	53.9	59.4	41.0
Adult Mental Health ASA Indications	***	NA	***

*** See "Adult Mental Health ASA Indications" trend chart for 1999 data.

* NYS Average is the average of county indicator scores (excluding New York City). Refer to Technical Notes for detailed rate information

2002 Youth Risk Indicators Rates

	CHAUTAUQUA COUNTY	Similar Counties Average	NYS Average*
Intrapersonal Problems			
Emotionally Disturbed Students	58.9	73.8	71.3
Youth ASA-Related Mental Health Diagnoses	**	NA	**
<i>** See "Youth ASA-Related Mental Health Diagnoses" trend chart for 1999 data.</i>			
Family Dysfunction			
Foster Care Admissions	24.9	45.0	24.9
Children in Foster Care	44.6	65.6	43.9
Preventive Service Openings	80.4	128.2	69.0
CPS Indicated Cases	202.4	186.0	92.1
CPS Mandated Reports	287.4	326.8	192.1
CPS Total Reports Received	615.9	639.8	356.7
Divorces	35.1	36.1	30.3
School Conduct			
Percent Average Daily Absenteeism	4.7	5.3	5.4
Percent Students Suspended	4.8	4.8	4.9
School Separation			
Percent High School Dropouts	4.2	2.9	4.2
Percent High School Graduates Not Attending College	21.3	20.5	18.6
Problem Behavior - Delinquency			
Youth Violent Crime Arrests	35.3	27.7	35.0
Youth Property Crime Arrest	202.4	170.6	130.1
Youth Other Arrests (non-ASA)	695.6	643.8	361.7
PINS Cases Opened	104.1	181.7	118.7
PINS Cases Total Served	191.7	228.3	155.0
Youth in OCFS Custody	12.4	5.6	5.8
Problem Behavior - Sexual			
Teenage Pregnancy	243.9	258.6	223.6
Teenage Abortions	69.4	81.4	94.4
Youth Hospital Diagnoses of STDs	0.8	0.3	0.4

* NYS Average is the average of county indicator scores (excluding New York City). Refer to Technical Notes for detailed rate information.

2002 Youth ASA Consequences Indicators

	CHAUTAUQUA COUNTY	Similar Counties Average	NYS Average*
Alcohol Consequences			
Youth Driving While Intoxicated (DWI) Arrests	69.6	75.8	46.6
Youth Probation Cases: Use at Offense - Alcohol	49.8	55.9	25.9
Youth Probation Cases: Court Mandates - Alcohol	134.8	163.3	95.4
Youth OASAS Alcohol Treatment	10.1	15.5	11.0
Drug Consequences			
Youth Drug Arrests	141.0	155.0	118.4
Youth Drug-Related Hospital Diagnoses	36.1	24.5	20.0
Youth Probation Cases: Use at Offense - Drugs	34.4	35.6	20.3
Youth Probation Cases: Court Mandates - Drugs	138.3	159.3	90.1
Youth OASAS Drug Treatment	13.5	39.9	42.4

* NYS Average is the average of county indicator scores (excluding New York City). Refer to Technical Notes for detailed rate information.

D. Indicator Trends

Community Risk

Community Disorganization

Violence..... D-2

Crime..... D-4

Poverty/Economic..... D-5

ASA Exposure

Alcohol Accessibility..... D-6

Adult Alcohol Health/Treatment... D-8

Adult Alcohol Probation..... D-10

Adult Drug Indications..... D-11

Youth Risk

Intrapersonal Problems..... D-15

Family Dysfunction..... D-16

School Conduct..... D-20

School Separation..... D-21

Problem Behavior -Delinquency... D-22

Problem Behavior -Sexual..... D-25

Youth ASA Consequences

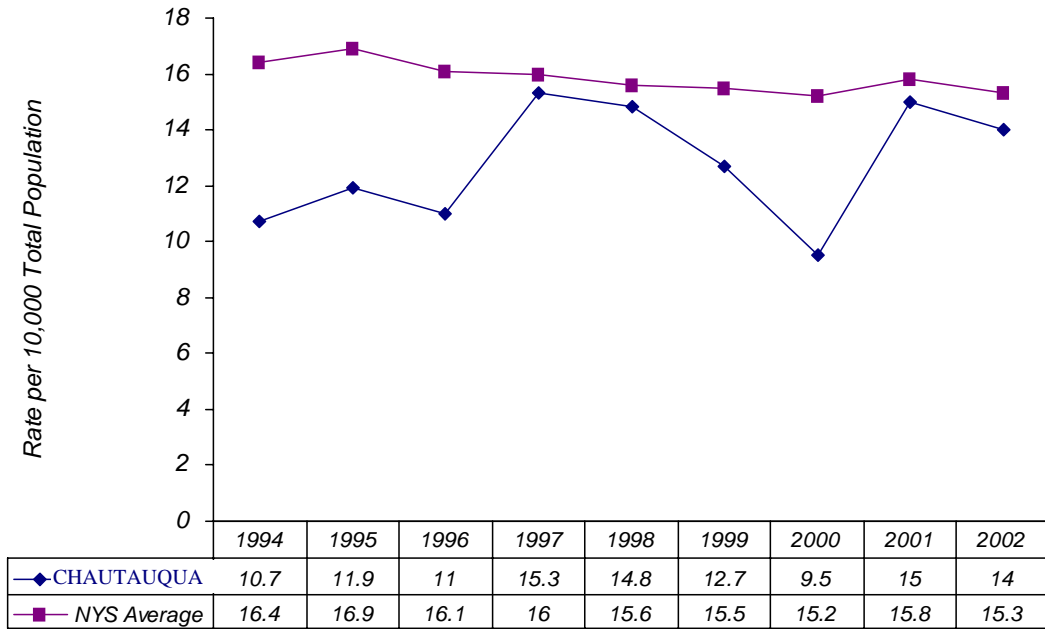
Alcohol..... D-27

Drugs..... D-29

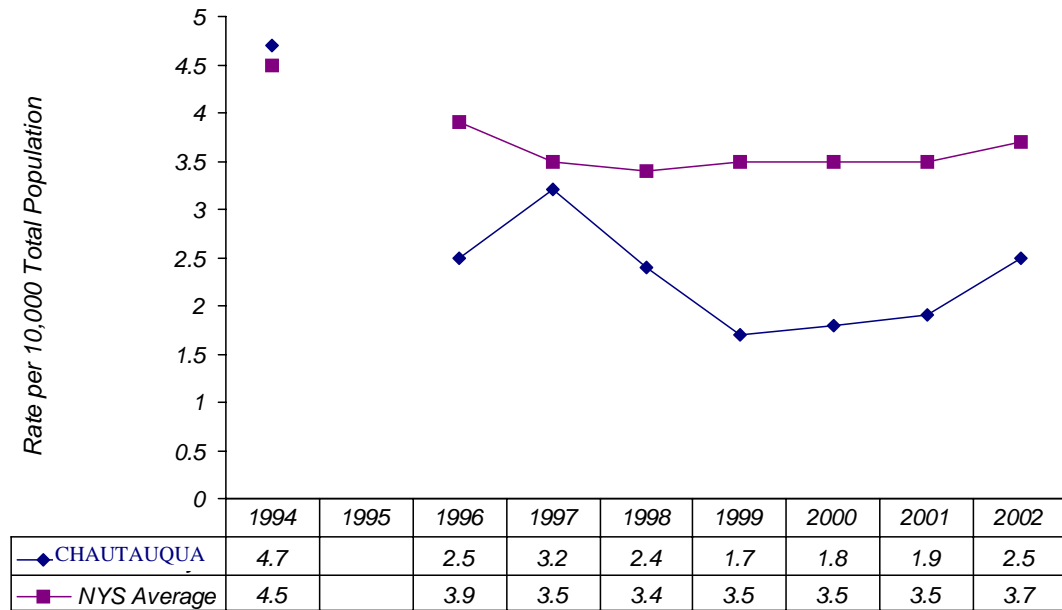
Indicator Trends: Community Risk

Community Disorganization -Violence

Violent Crime Arrests



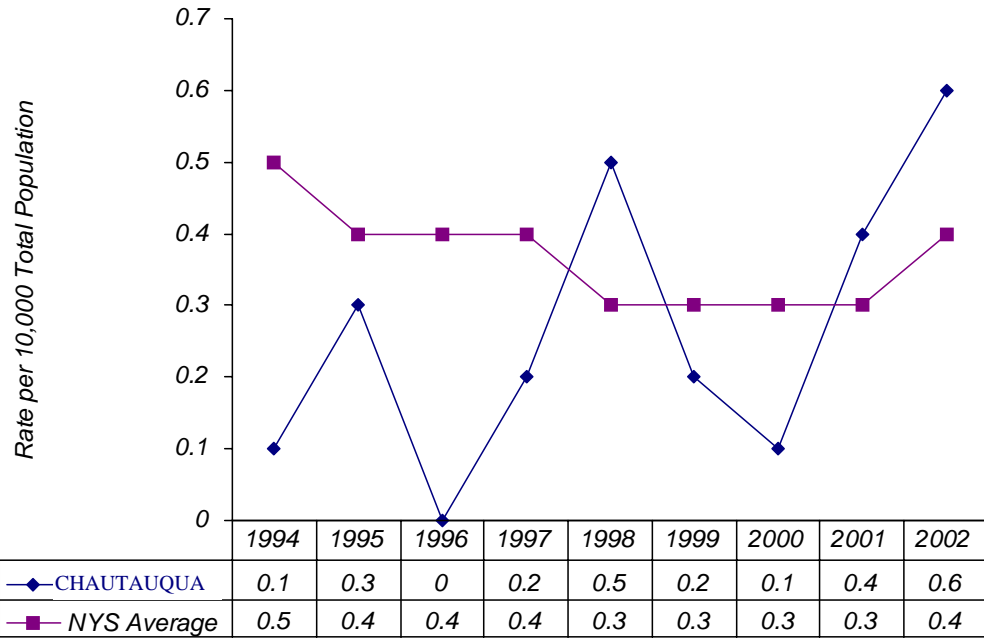
Hospital Diagnoses of Intentional Injury



Indicator Trends: Community Risk

Community Disorganization - Violence (cont.)

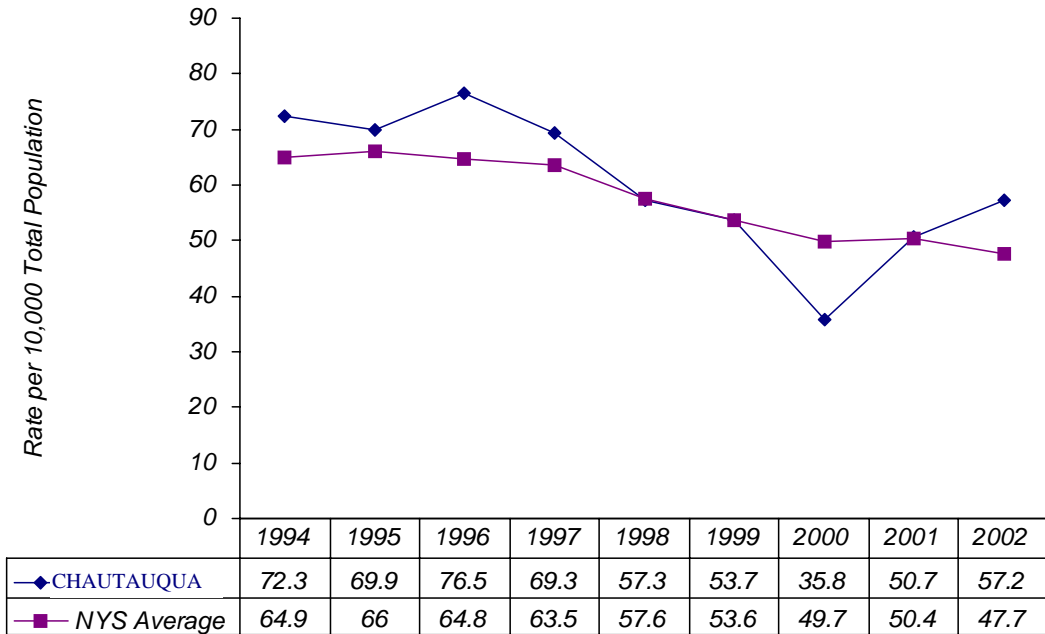
Homicides



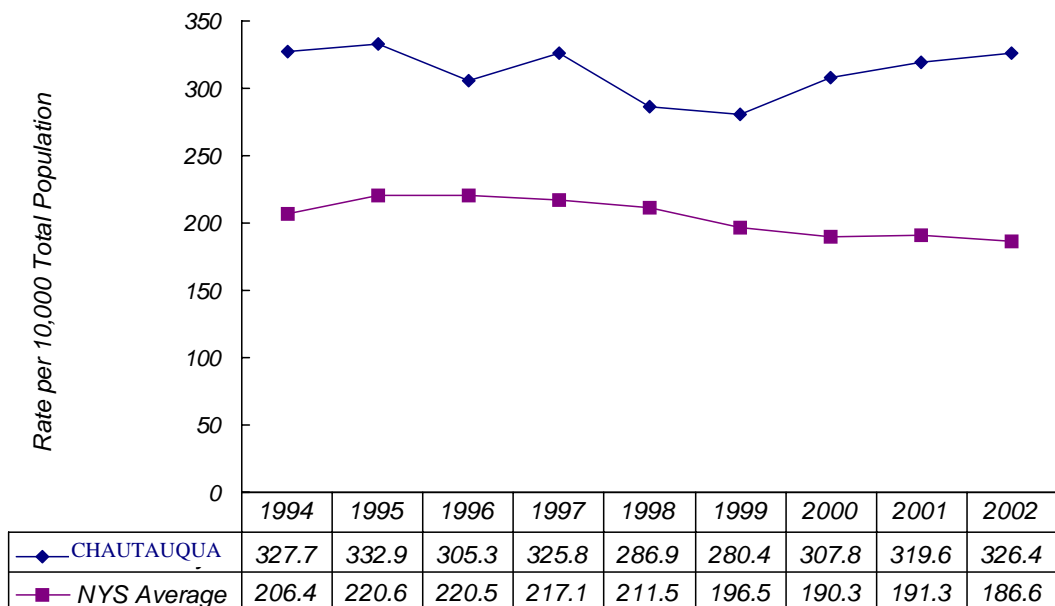
Indicator Trends - Community Risk

Community Disorganization - Crime

Property Crime Arrests



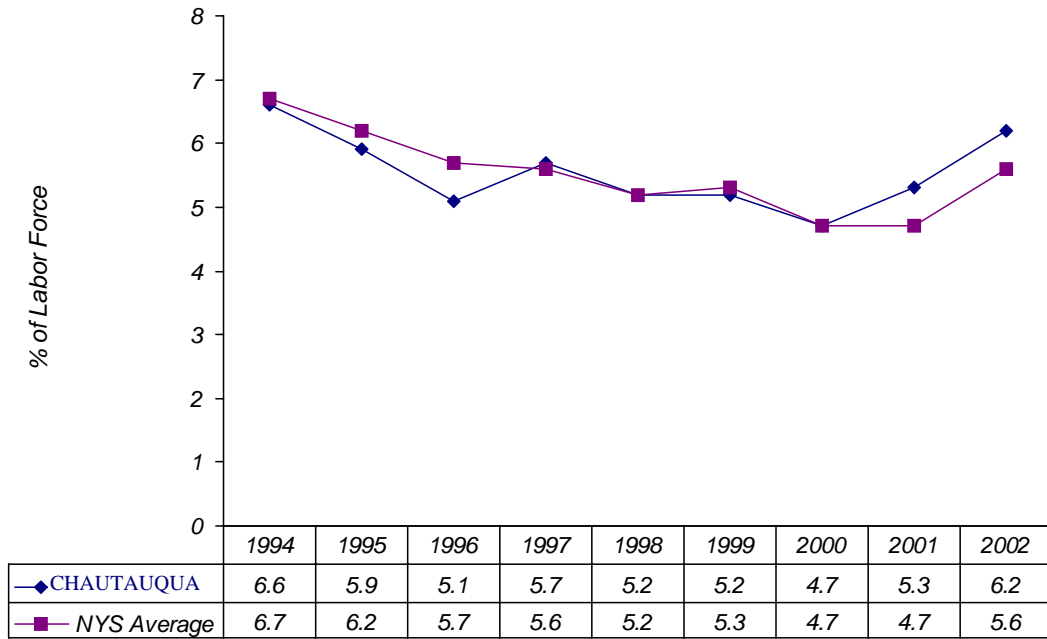
Other Arrests



Indicator Trends - Community Risk

Community Disorganization - Poverty/Economic

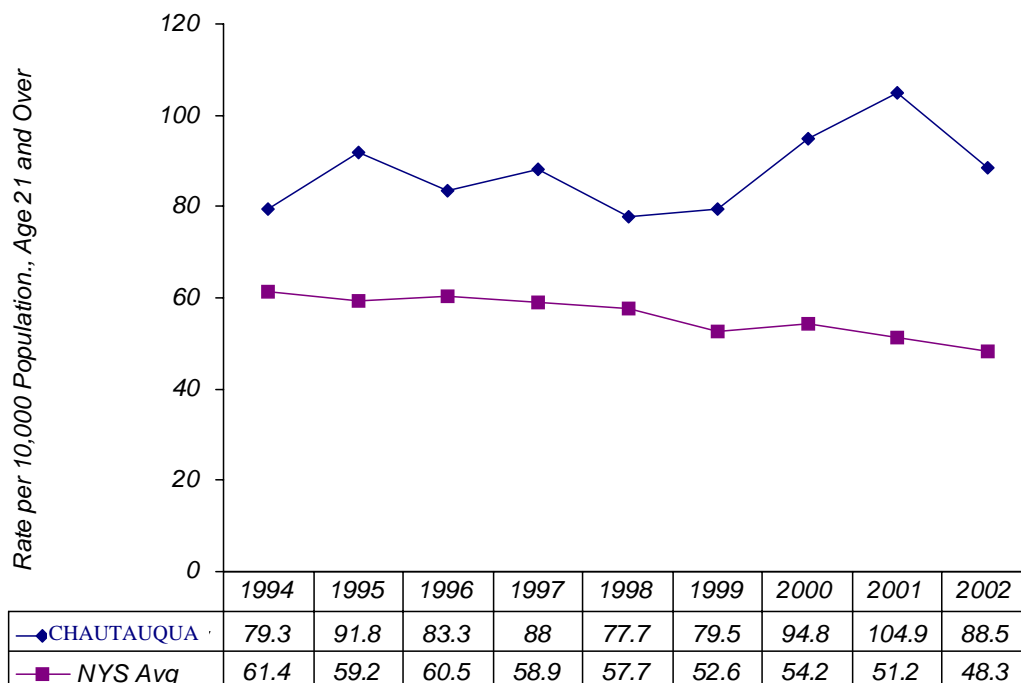
Percent Unemployment



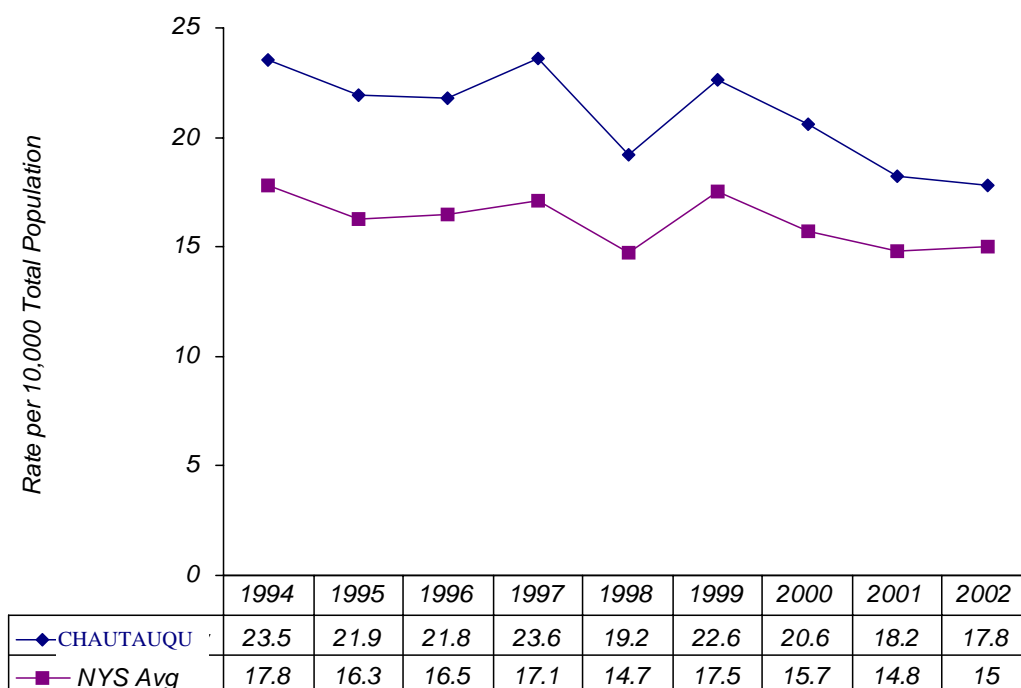
Indicator Trends: Community Risk

ASA Exposure - Alcohol Accessibility

Adult Driving While Intoxicated (DWI) Arrests



On-Premise Alcohol Outlets



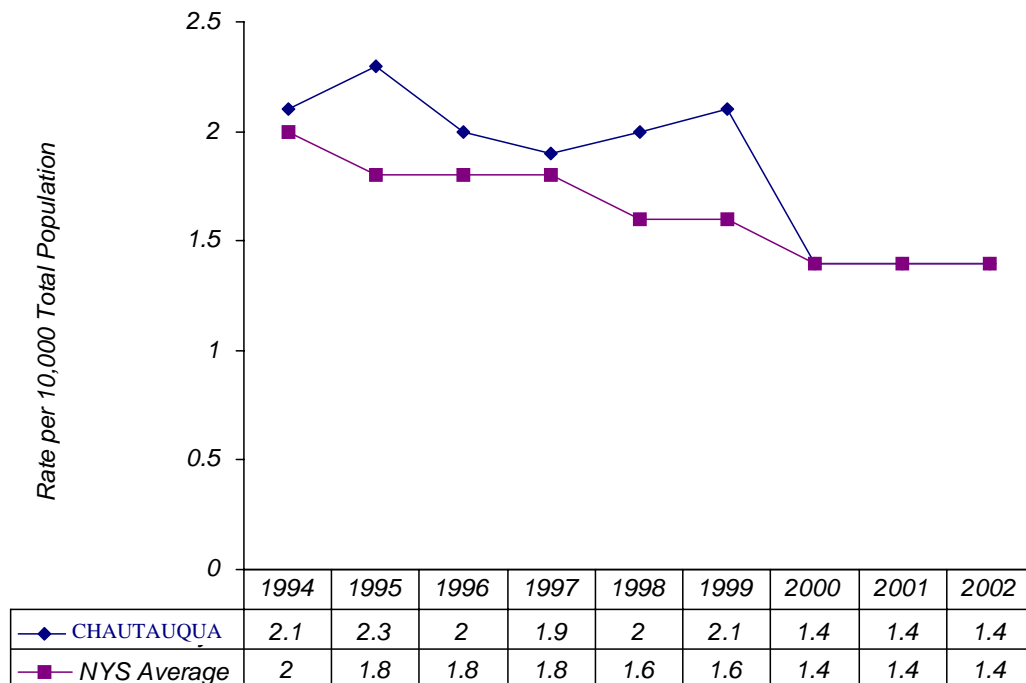
Indicator Trends: Community Risk

ASA Exposure - Alcohol Accessibility (cont.)

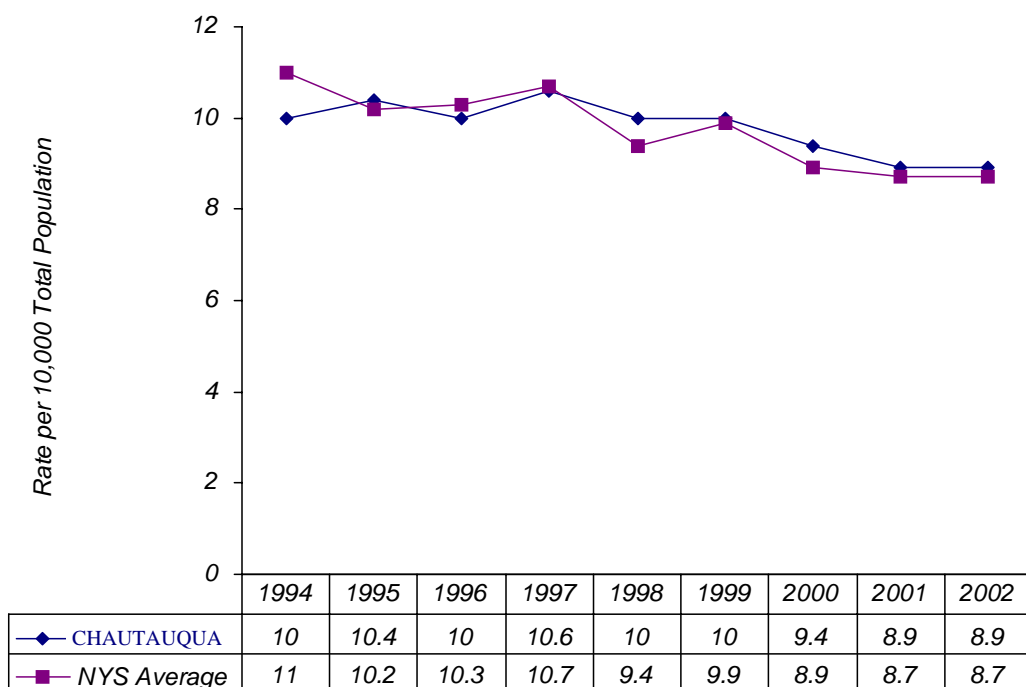
2005 PRISMS

COMMUNITY RISK TRENDS

Off-Premise Liquor and Wine Outlets



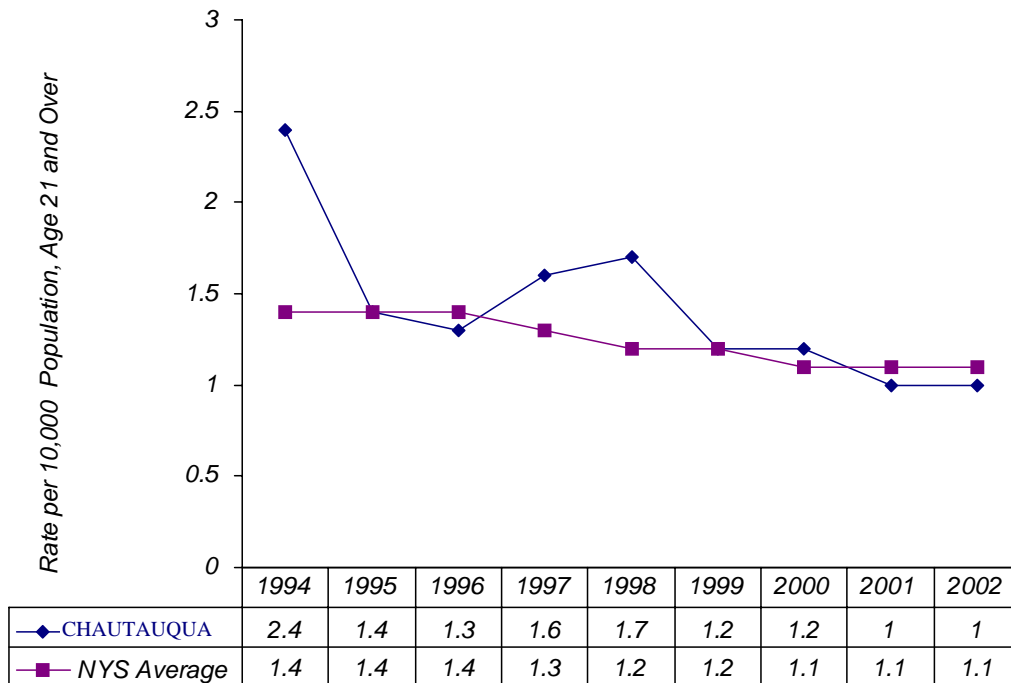
Off-Premise Beer and Wine Cooler Outlets



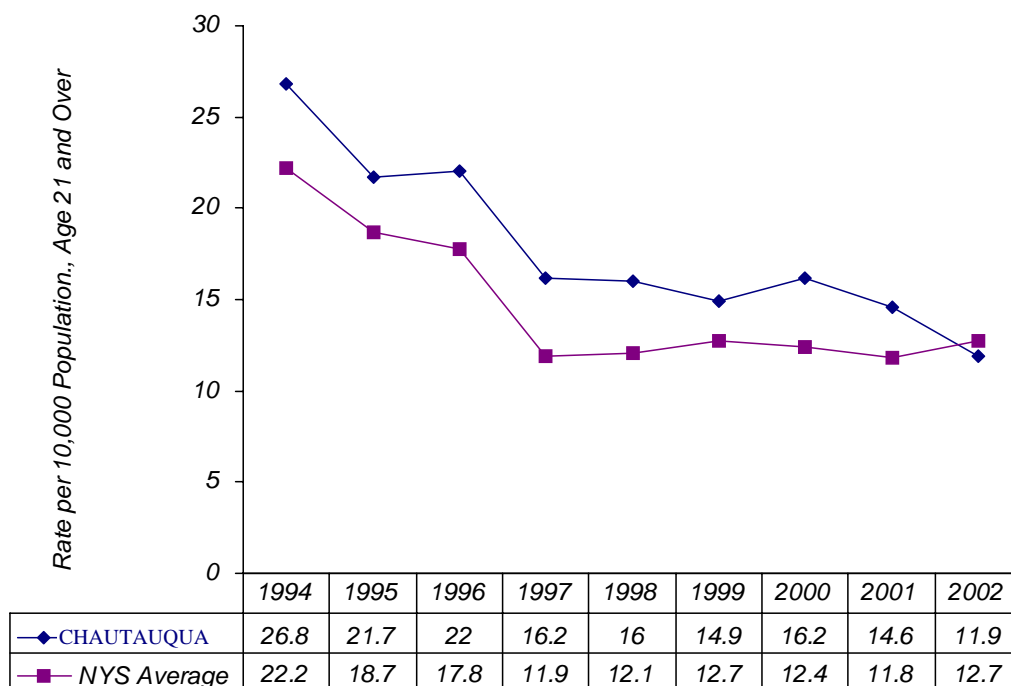
Indicator Trends: Community Risk

ASA Exposure - Adult Alcohol Health/Treatment

Adult Alcohol-Related Deaths



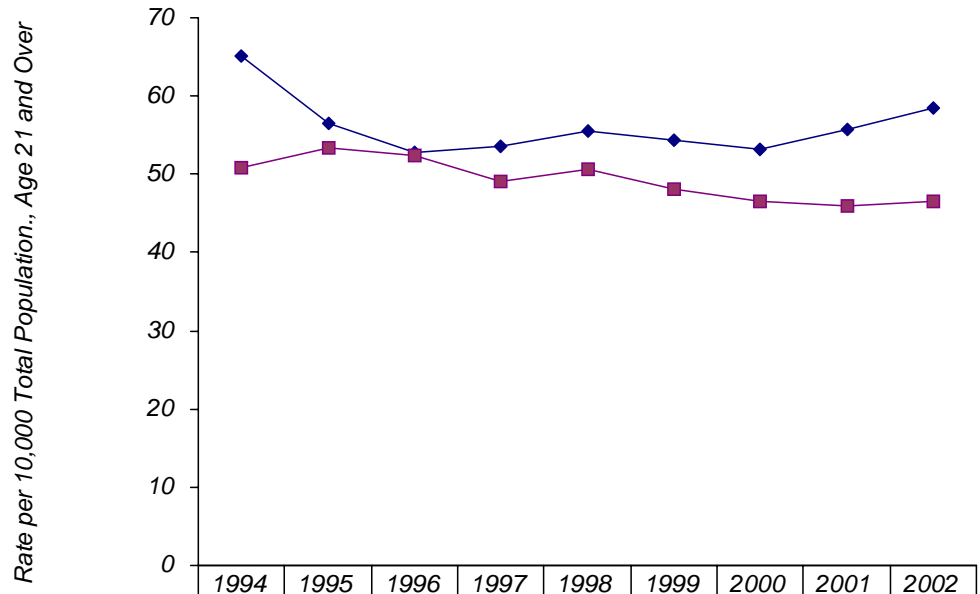
Adult Alcohol-Related Hospital Diagnoses



Indicator Trends: Community Risk

ASA Exposure - Adult Alcohol Health/Treatment (cont.)

Adult OASAS Alcohol Treatment

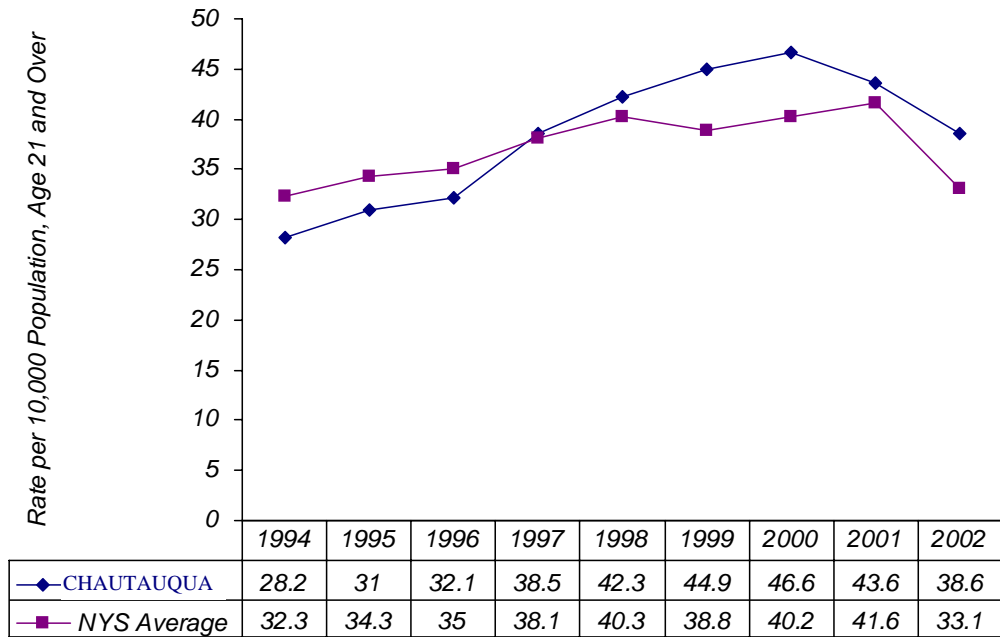


COMMUNITY RISK TRENDS

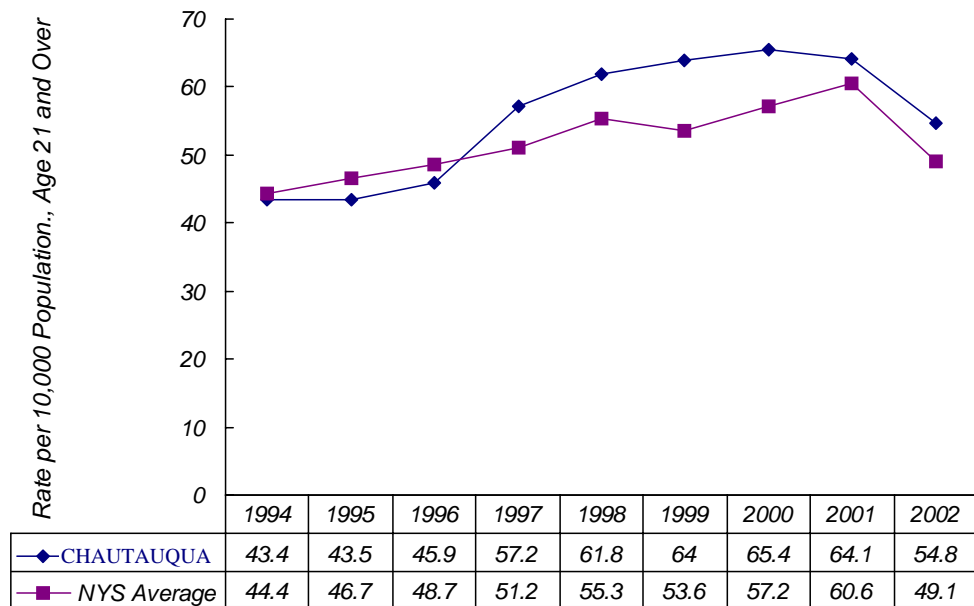
Indicator Trends - Community Risk

ASA Exposure - Alcohol Probation

Adult Probation Cases: Use at Offense - Alcohol



Adult Probation Cases: Court Mandates - Alcohol



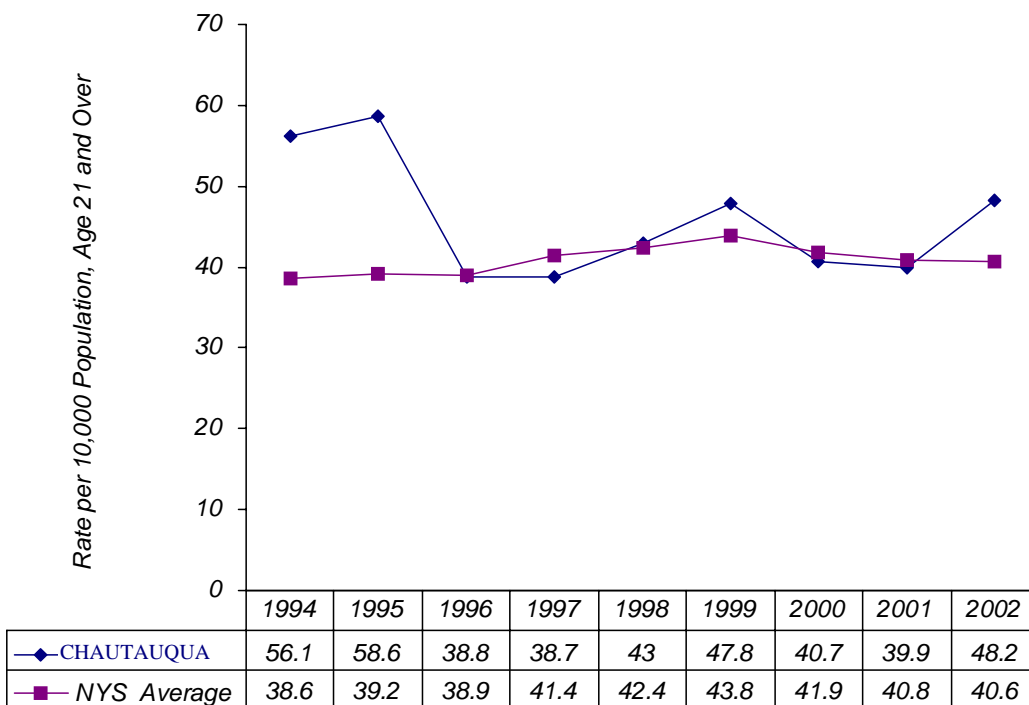
Indicator Trends: Community Risk

ASA Exposure - Adult Drug Indications

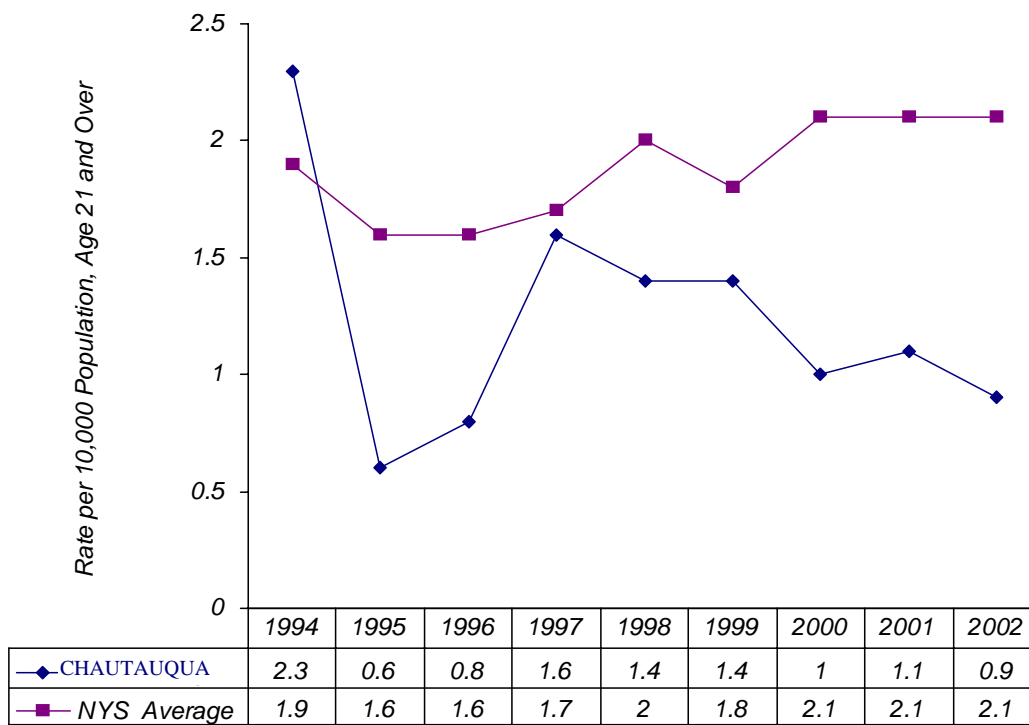
2005 PRISMS

COMMUNITY RISK TRENDS

Adult Drug Arrests



Adult DUI Drug Arrests



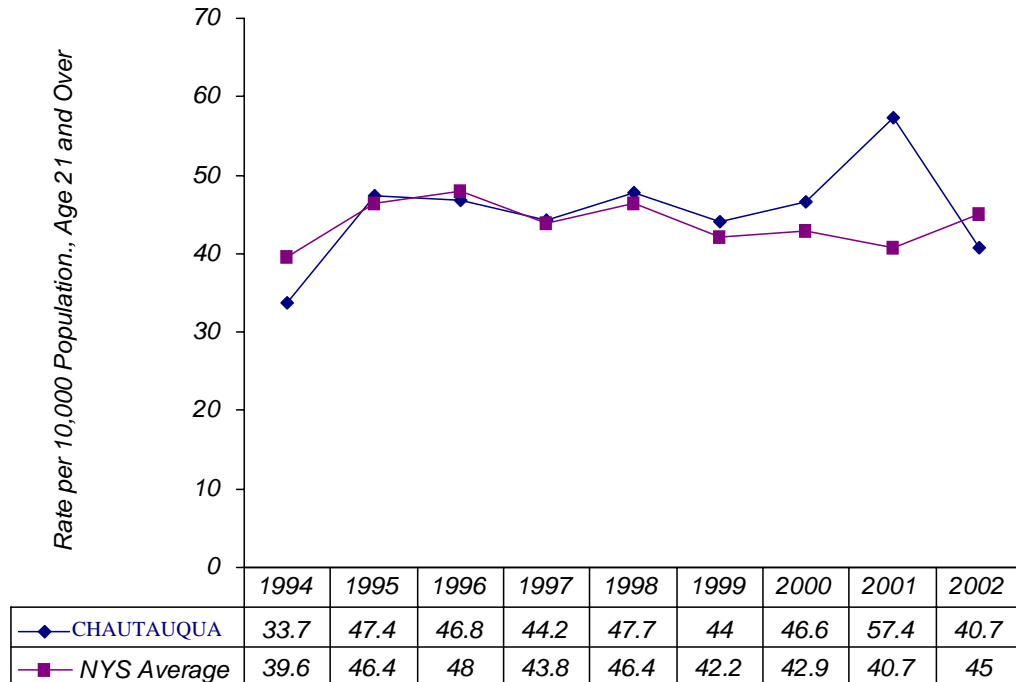
Indicator Trends - Community Risk

ASA Exposure - Adult Drug Indications (cont.)

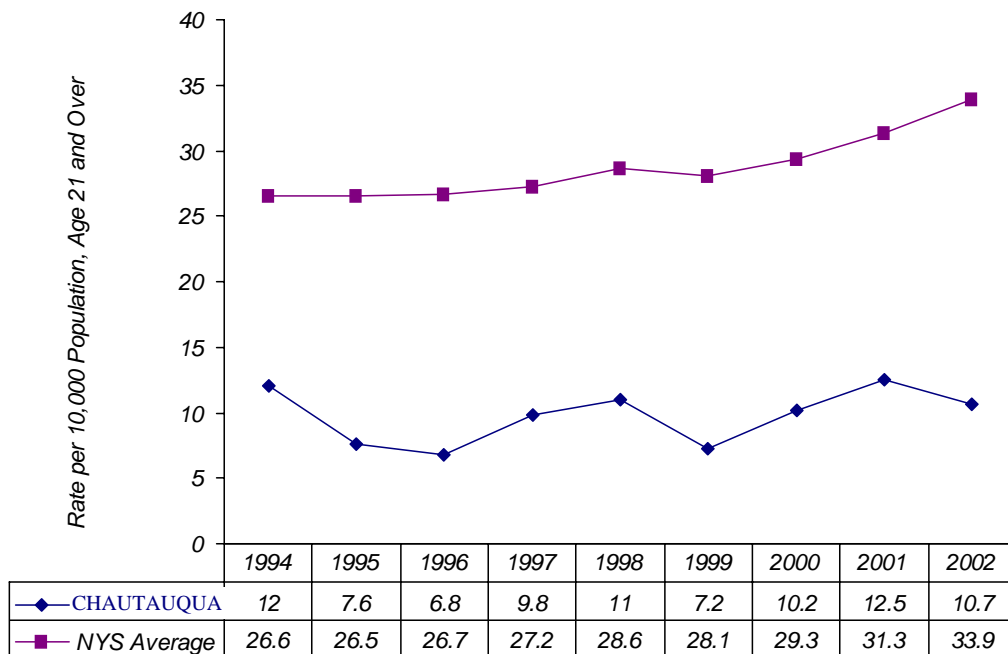
2005 PRISMS

COMMUNITY RISK TRENDS

Adult Drug-Related Hospital Diagnoses



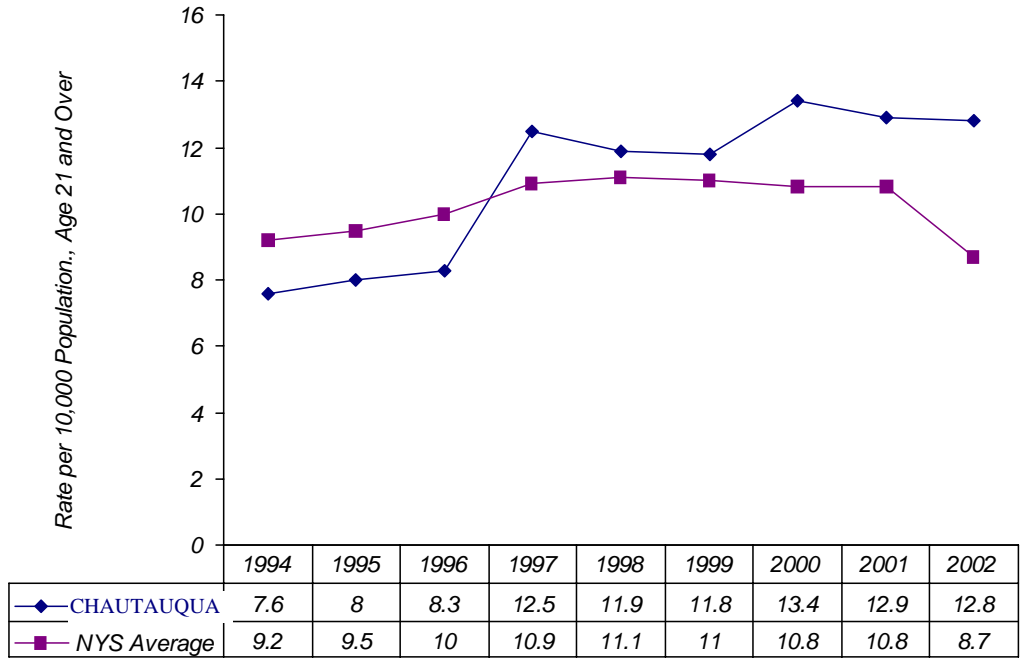
Adult OASAS Drug Treatment



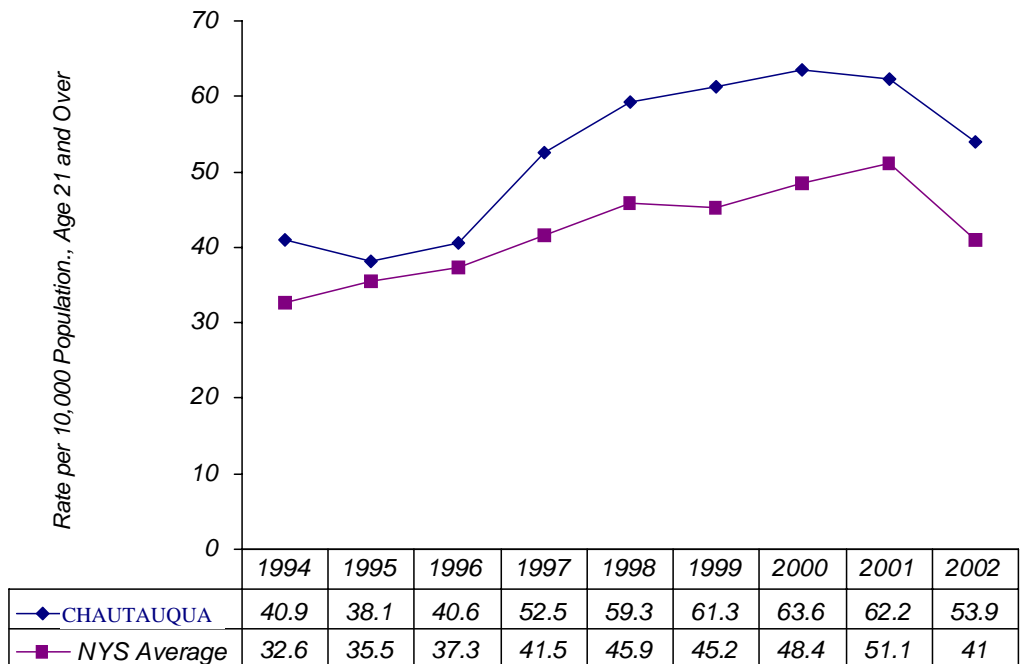
Indicator Trends: Community Risk

ASA Exposure - Adult Drug Indications (cont.)

Adult Probation Cases: Use at Offense - Drugs



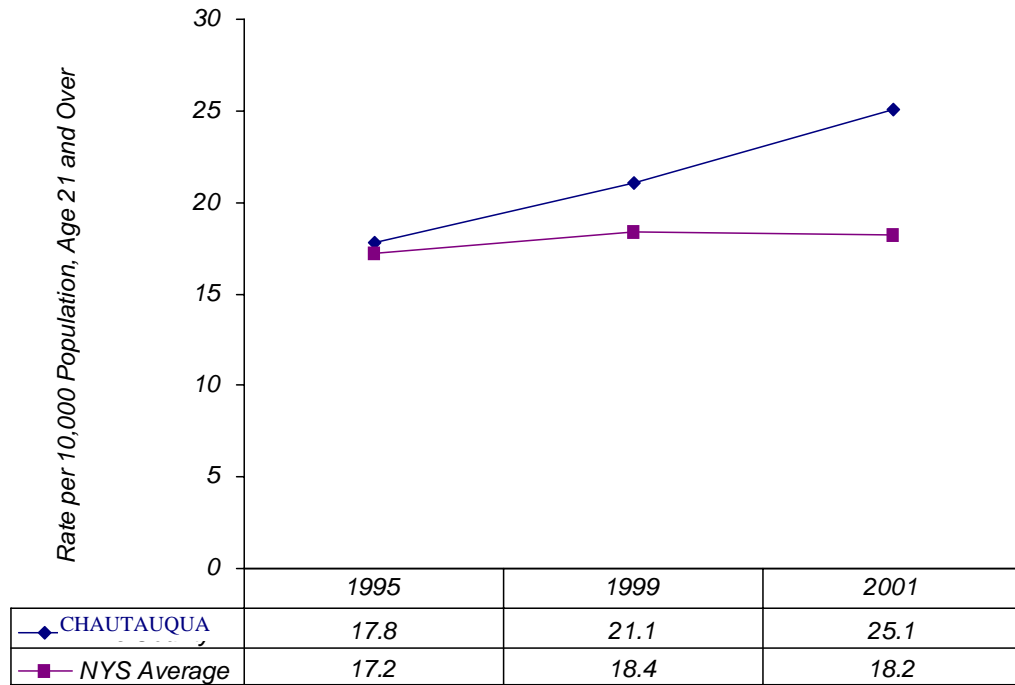
Adult Probation Cases: Court Mandates - Drugs



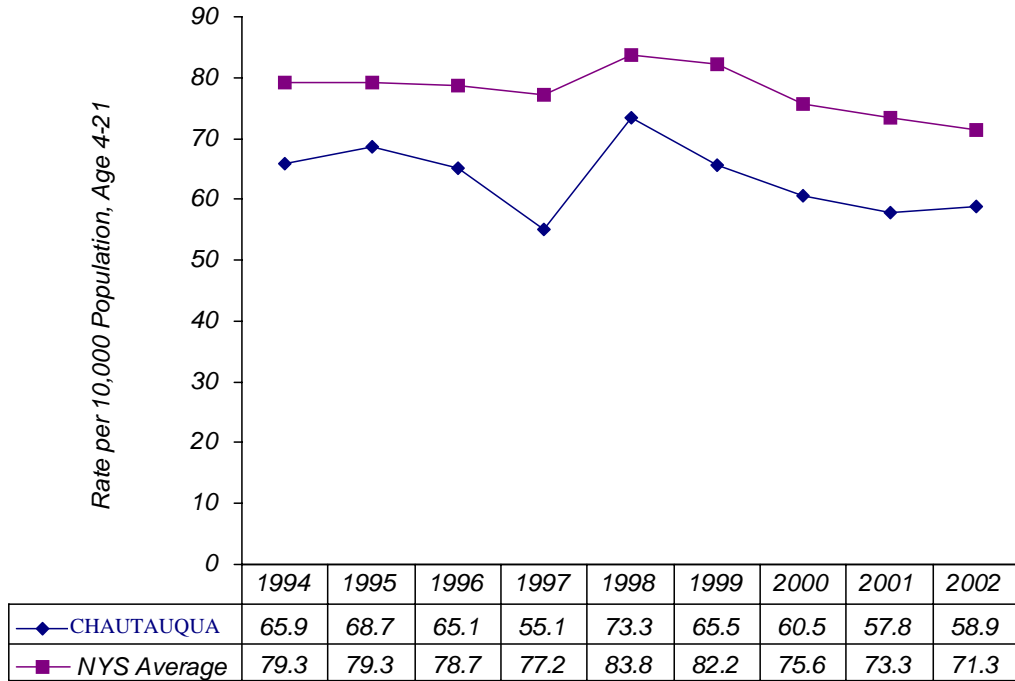
Indicator Trends: Community Risk

ASA Exposure - Adult Drug Indications (cont.)

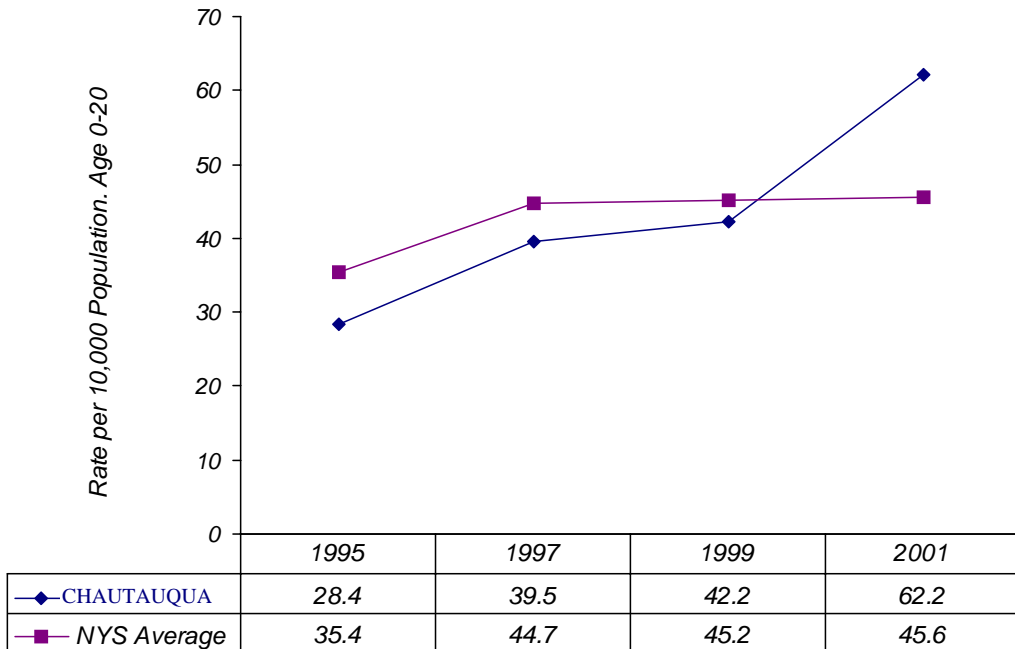
Adult Mental Health ASA Indications



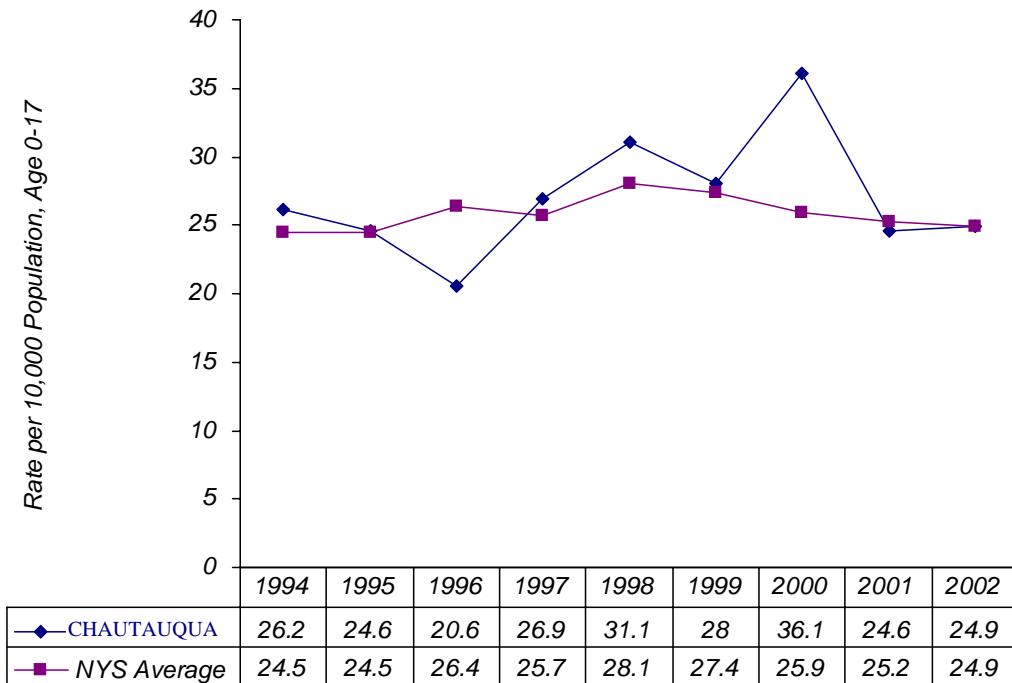
Emotionally Disturbed Students



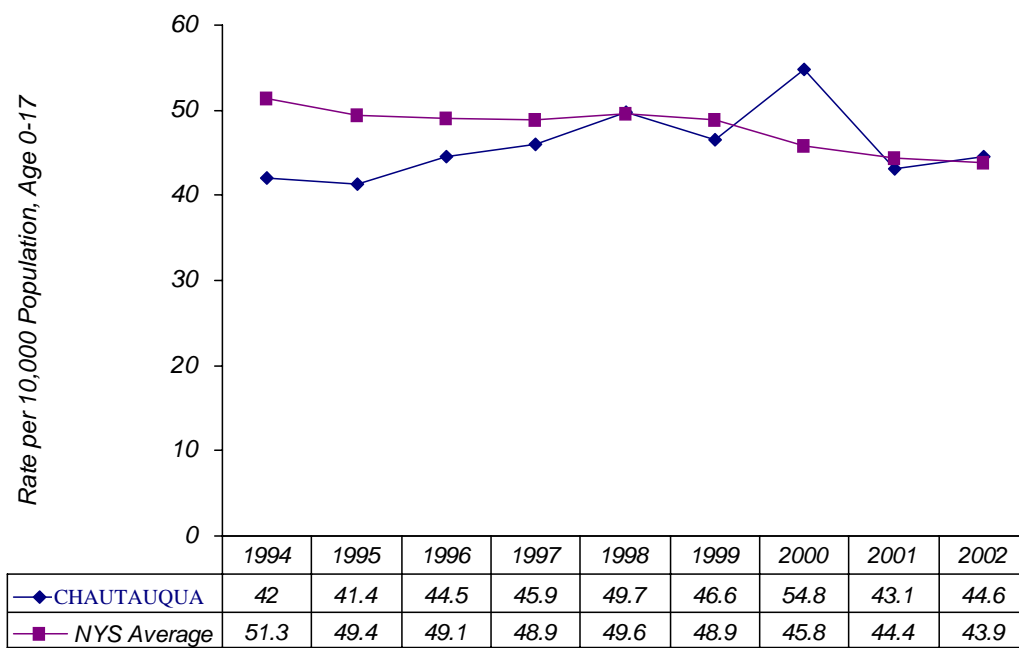
Youth ASA-Related Mental Health Diagnoses



Foster Care Admissions

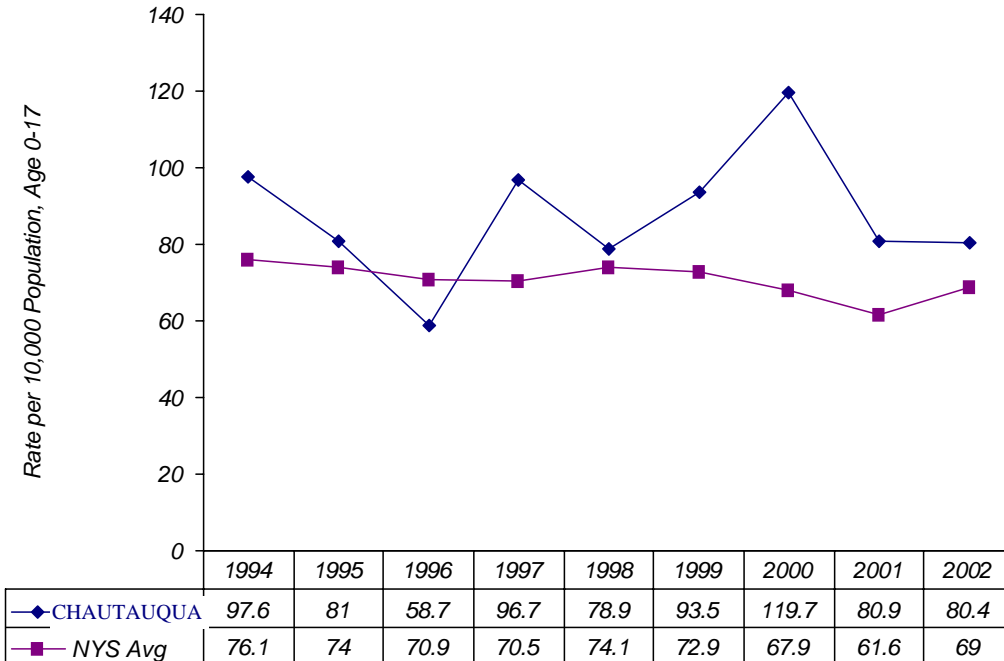


Children in Foster Care

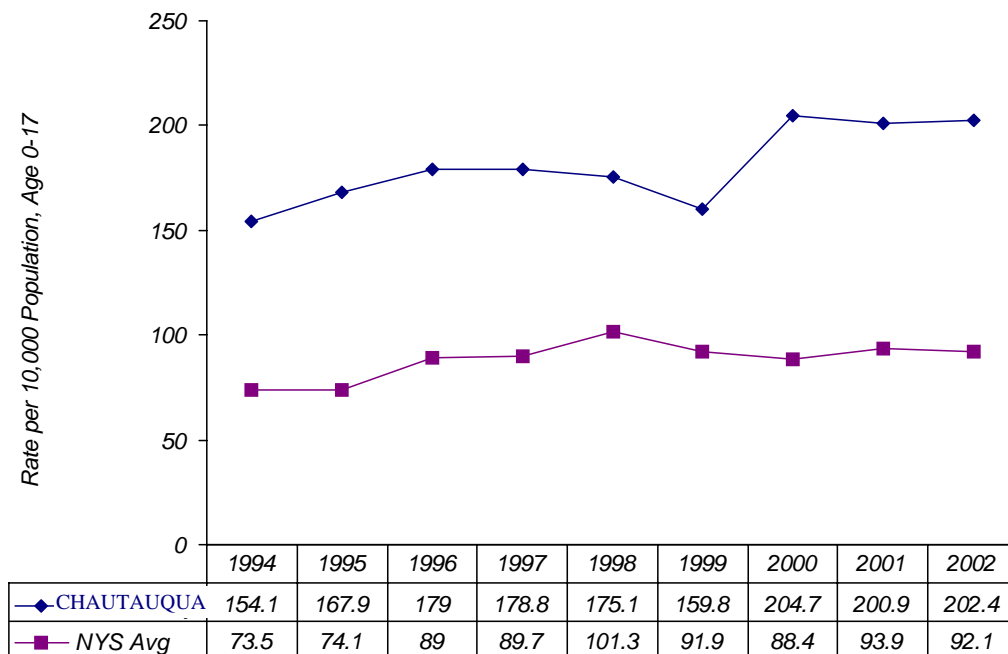


Indicator Trends: Youth Risk Family Dysfunction (cont.)

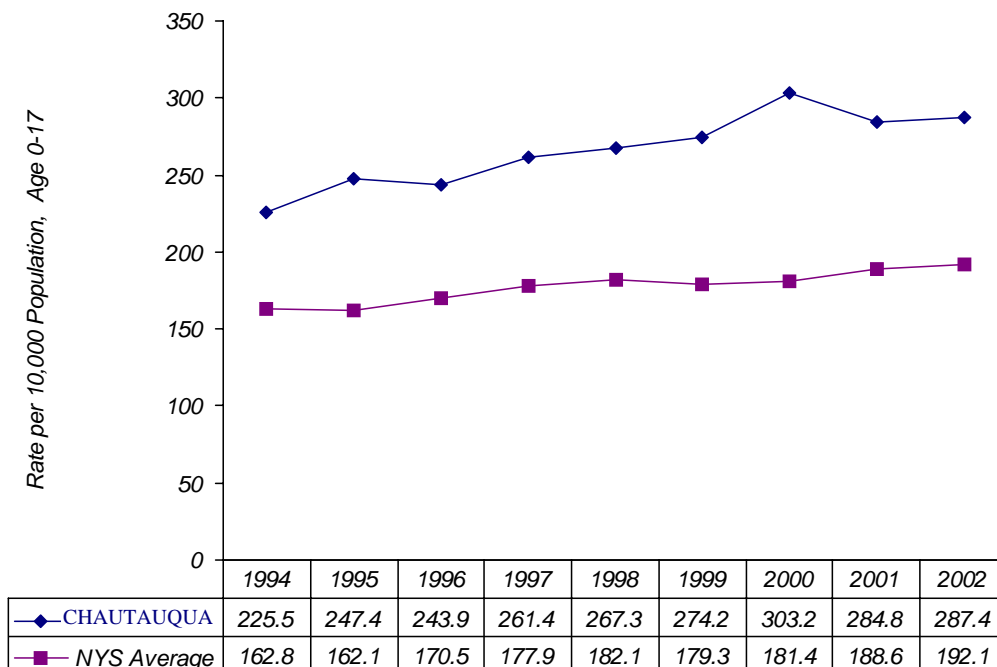
Child Protective Service Preventive Service Openings



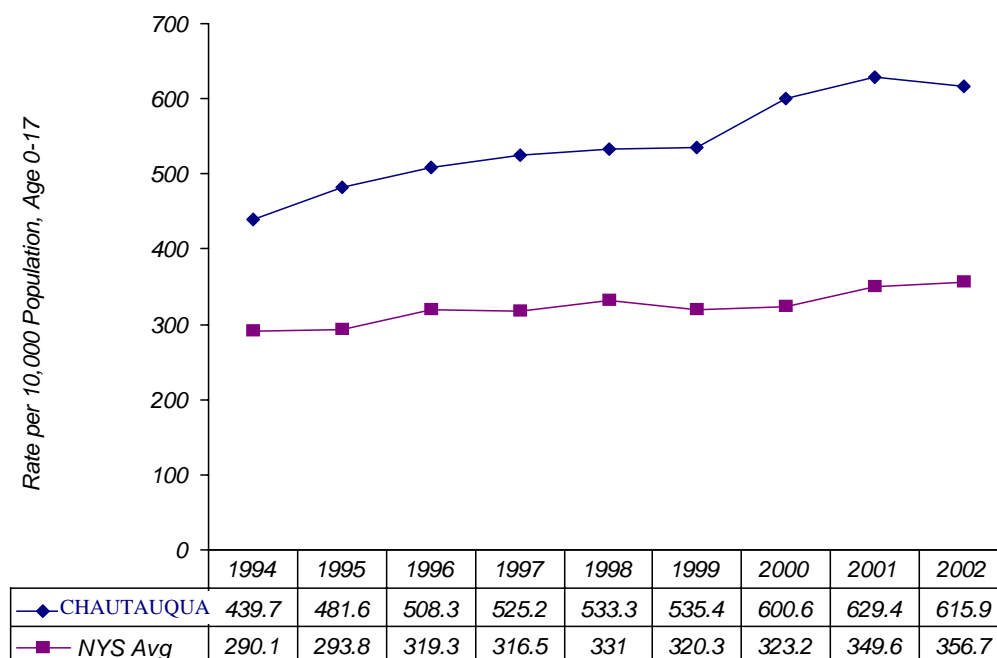
Child Protective Service Indicated Cases



Child Protective Service Mandated Reports



Child Protective Service Total Reports Received

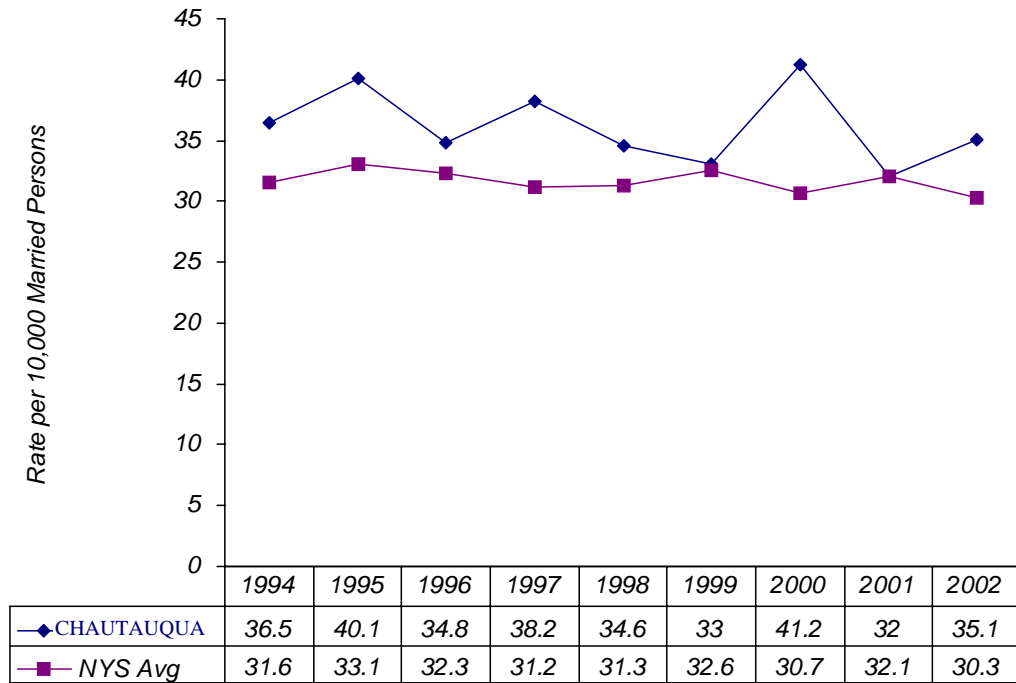


Indicator Trends: Youth Risk Index

Family Dysfunction (cont.)

2005 PRISMS

Divorces



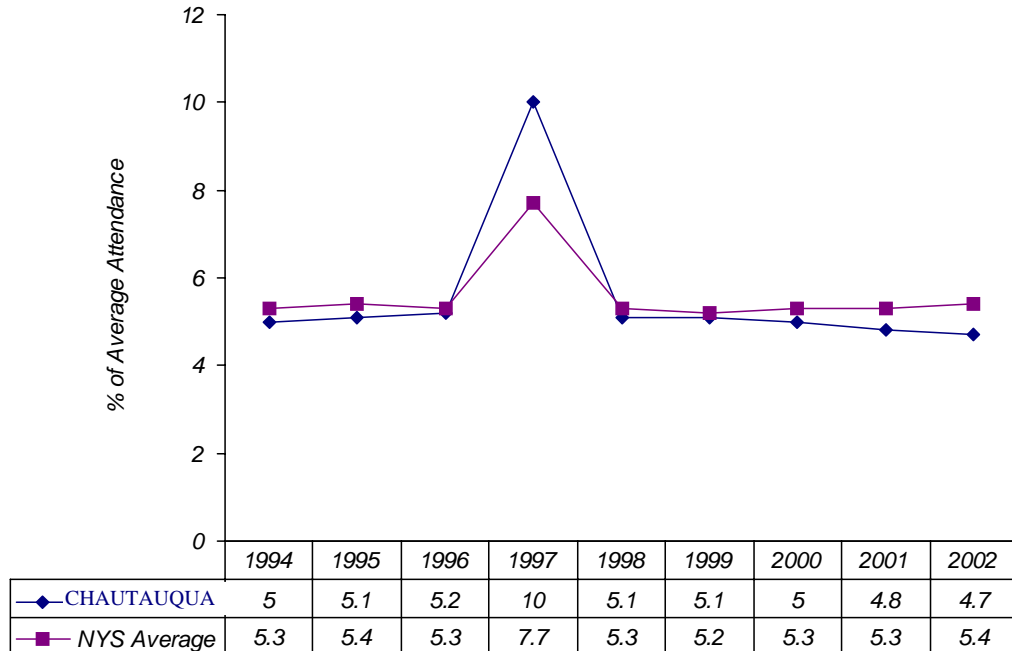
Y
O
U
T
H

R
I
S
K

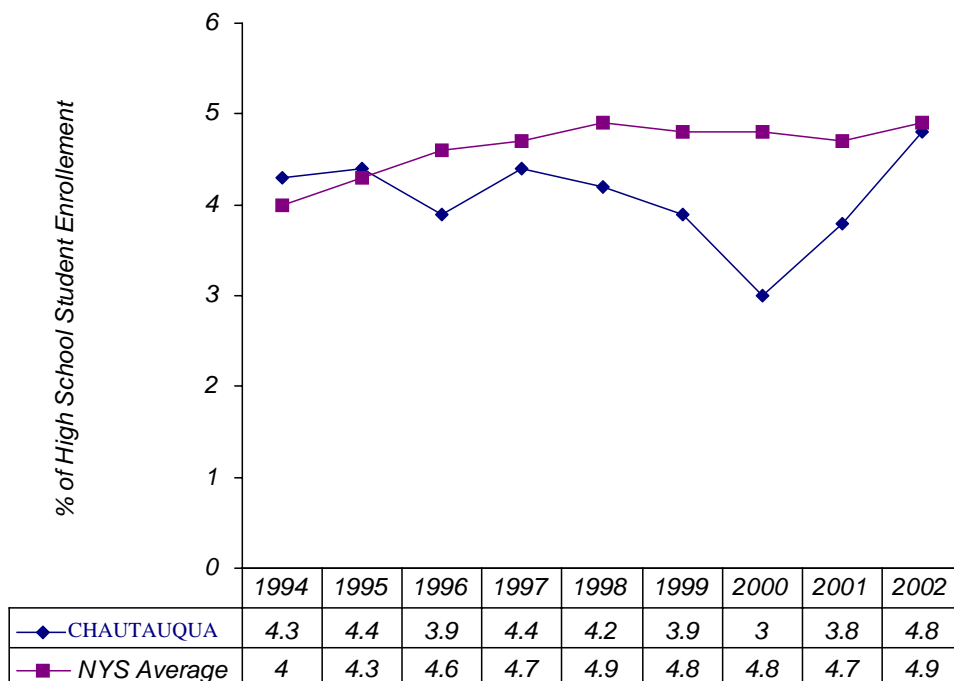
T
R
E
N
D
S

Indicator Trends: Youth Risk School Conduct

Percent Average Daily Absenteeism

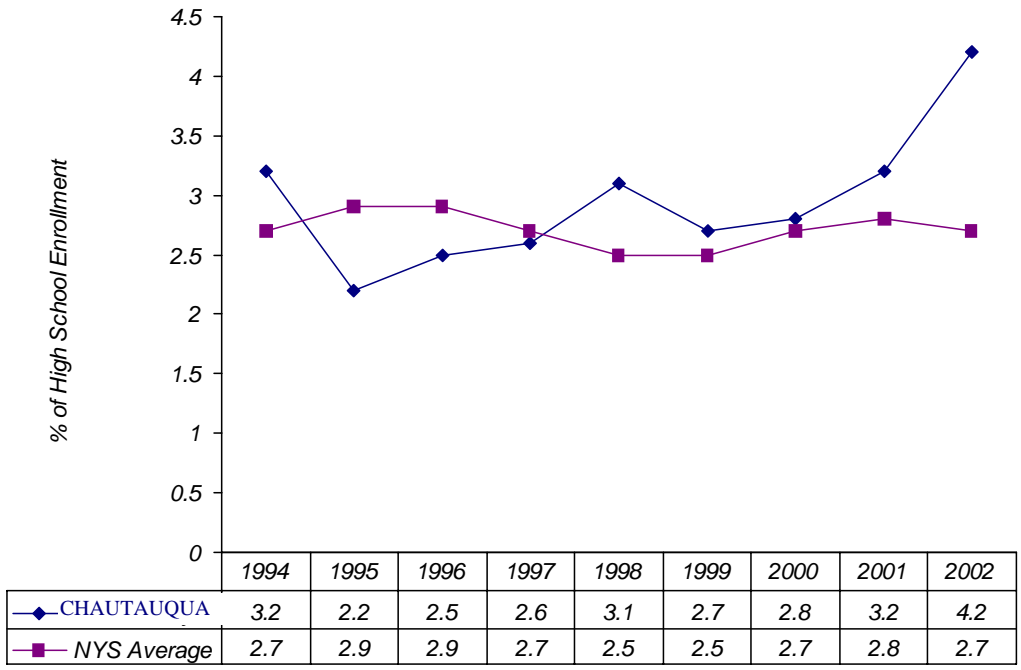


Percent Students Suspended

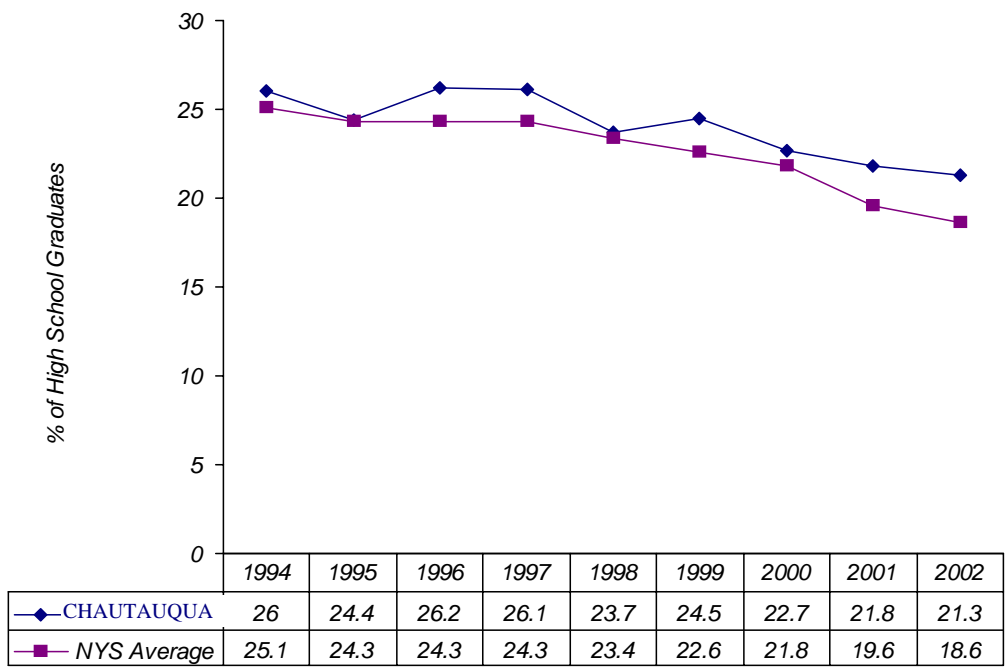


Indicator Trends: Youth Risk School Separation

Percent High School Dropouts



*Percent High School Graduates
Not Attending College*



Indicator Trends: Youth Risk Problem Behavior - Delinquency

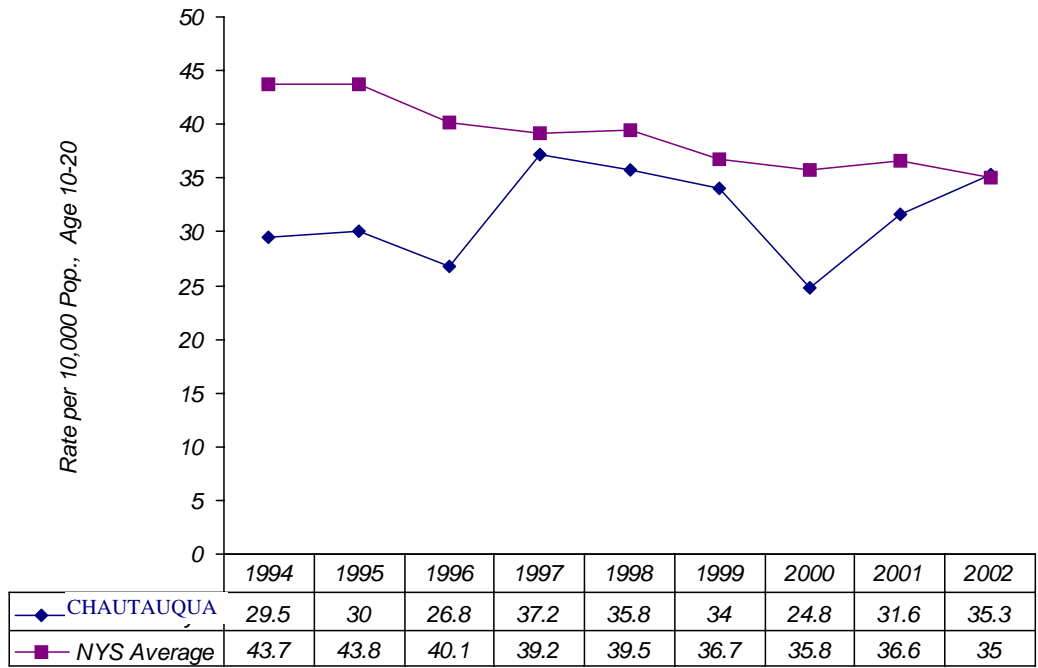
2005 PRISMS

Y
O
U
T
H

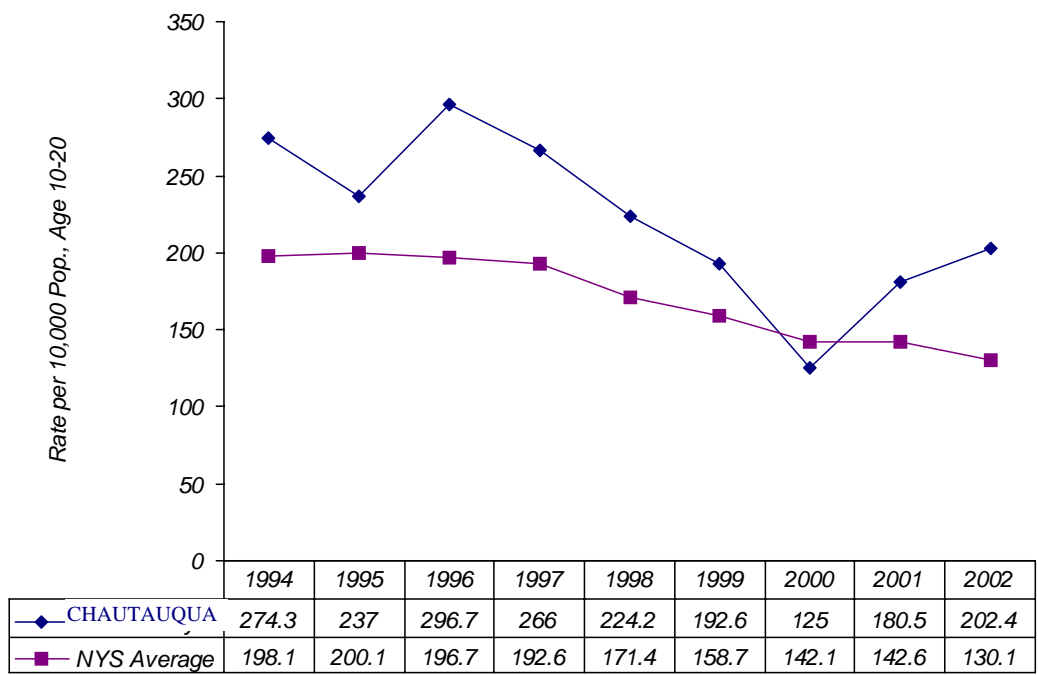
R
I
S
K

T
R
E
N
D
S

Youth Violent Crime Arrests



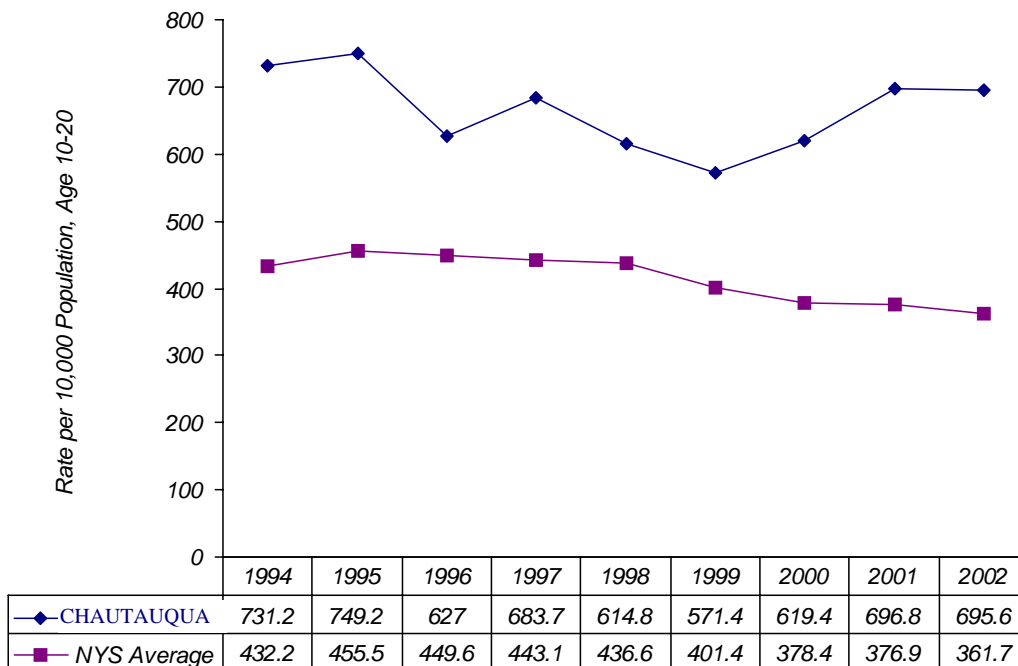
Youth Property Crime Arrests



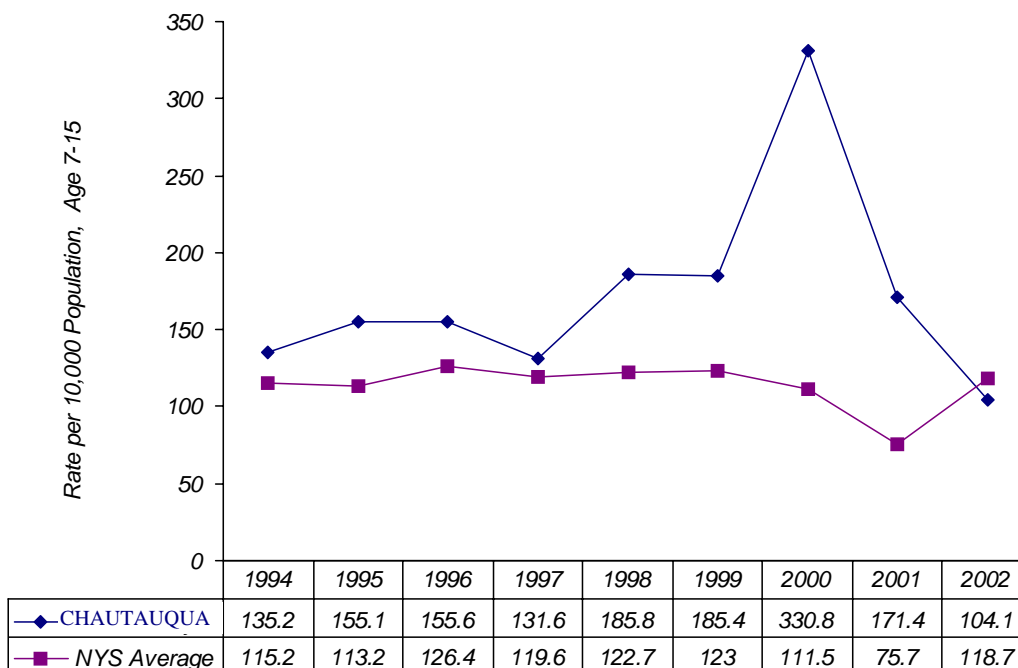
Indicator Trends: Youth Risk

Problem Behavior - Delinquency (cont.)

Youth Other Arrests (non-ASA)

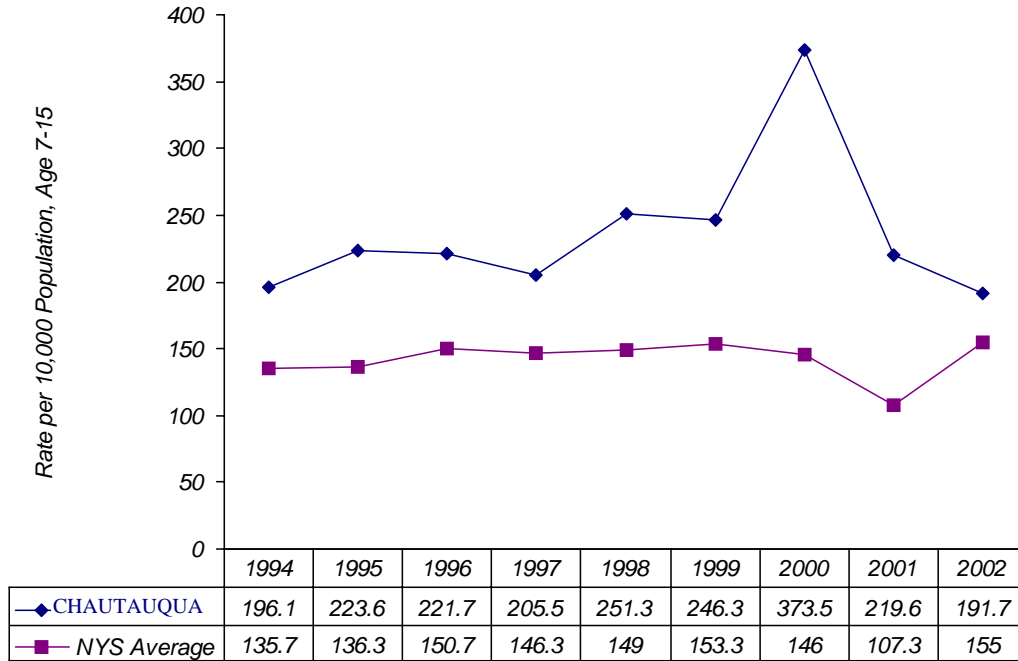


PINS Cases Opened

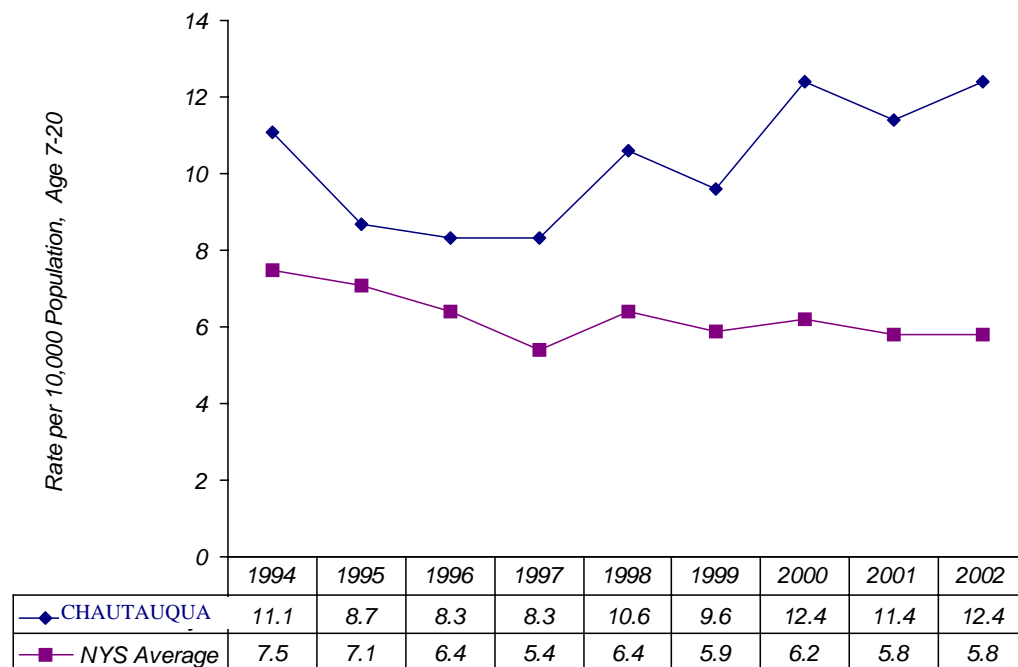


Indicator Trends: Youth Risk Problem Behavior - Delinquency (cont.)

PINS Total Served



Youth in OCFS Custody



Indicator Trends: Youth Risk Problem Behavior - Sexual

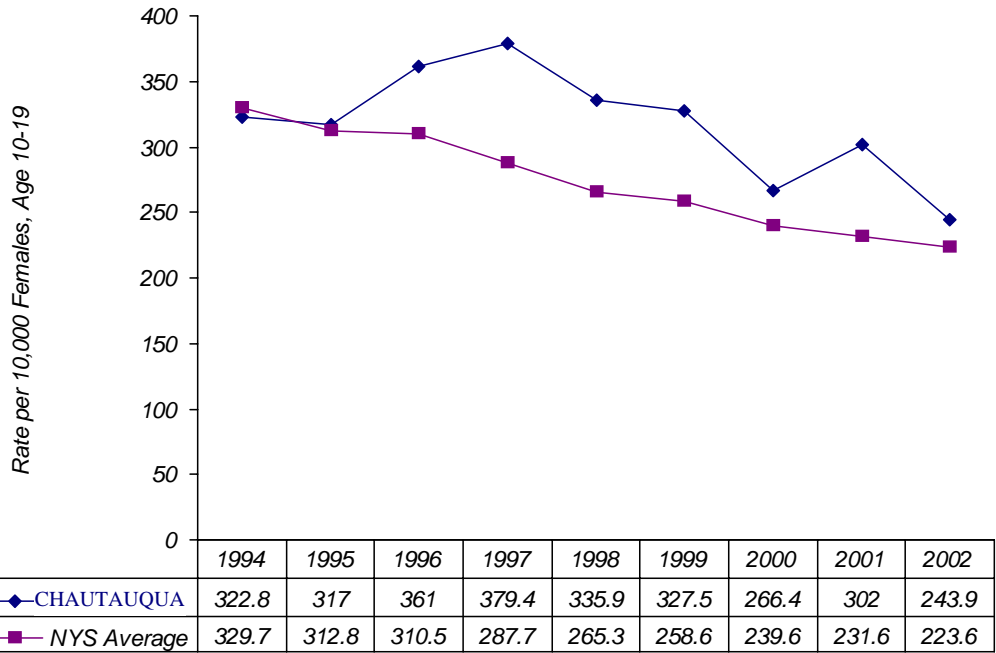
2005 PRISMS

Y
O
U
T
H

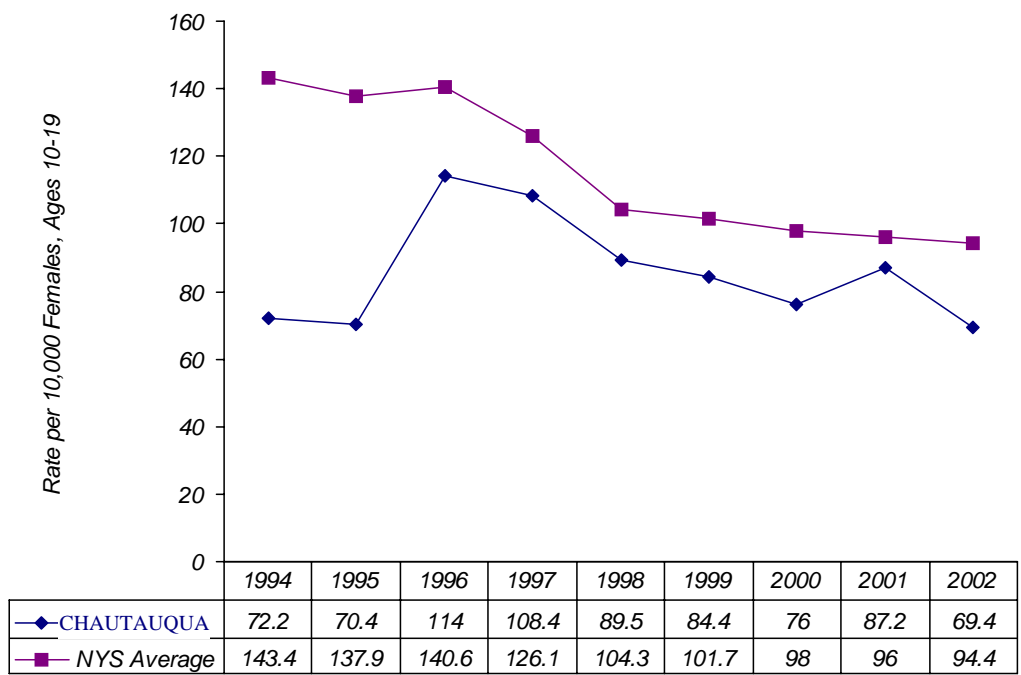
R
I
S
K

T
R
E
N
D
S

Teenage Pregnancy

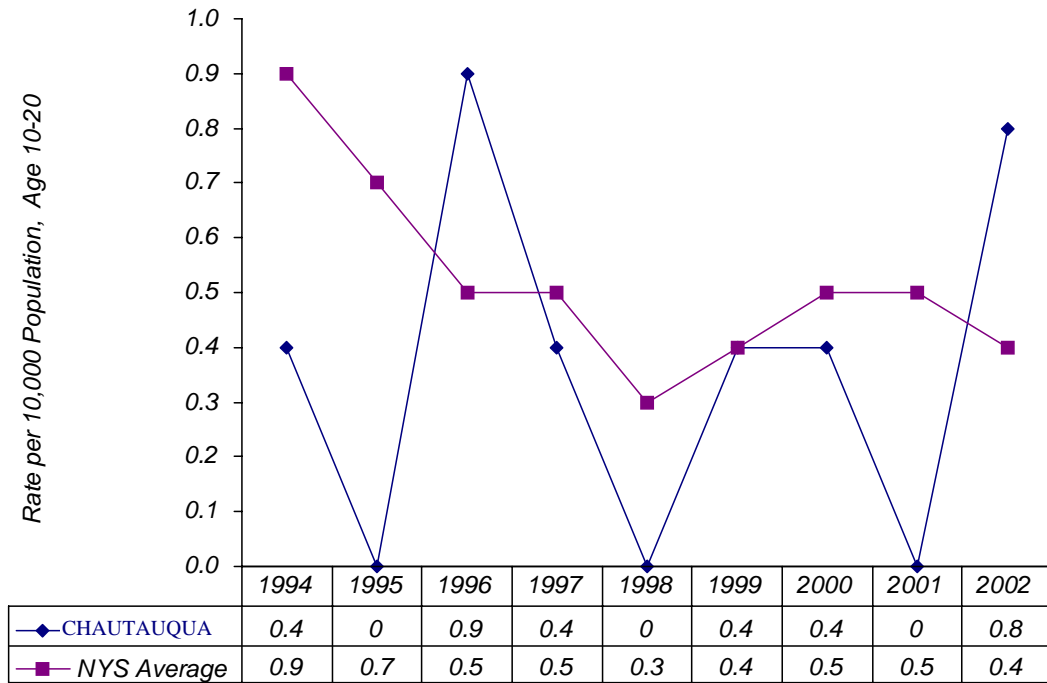


Teenage Abortions

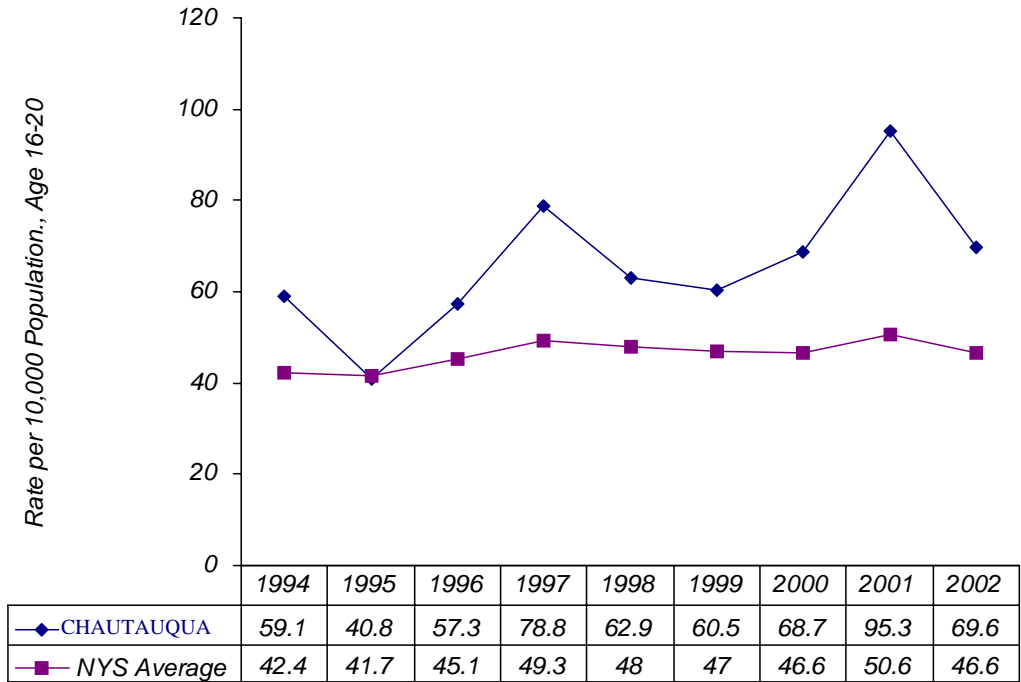


Indicator Trends: Youth Risk Problem Behavior - Sexual (cont.)

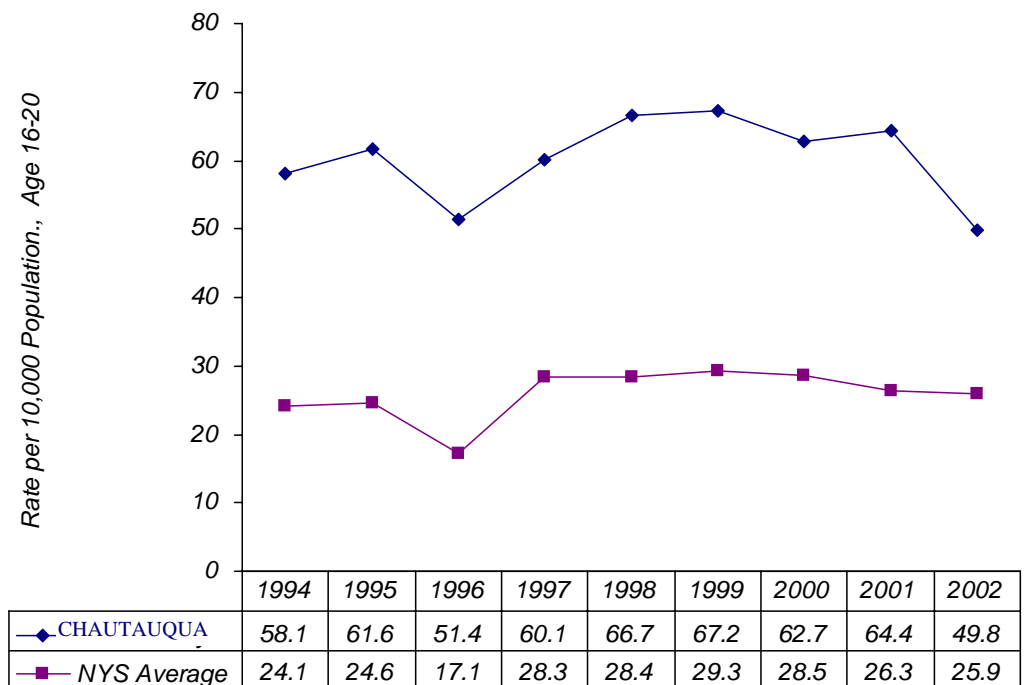
Youth Hospital Diagnoses of STDs



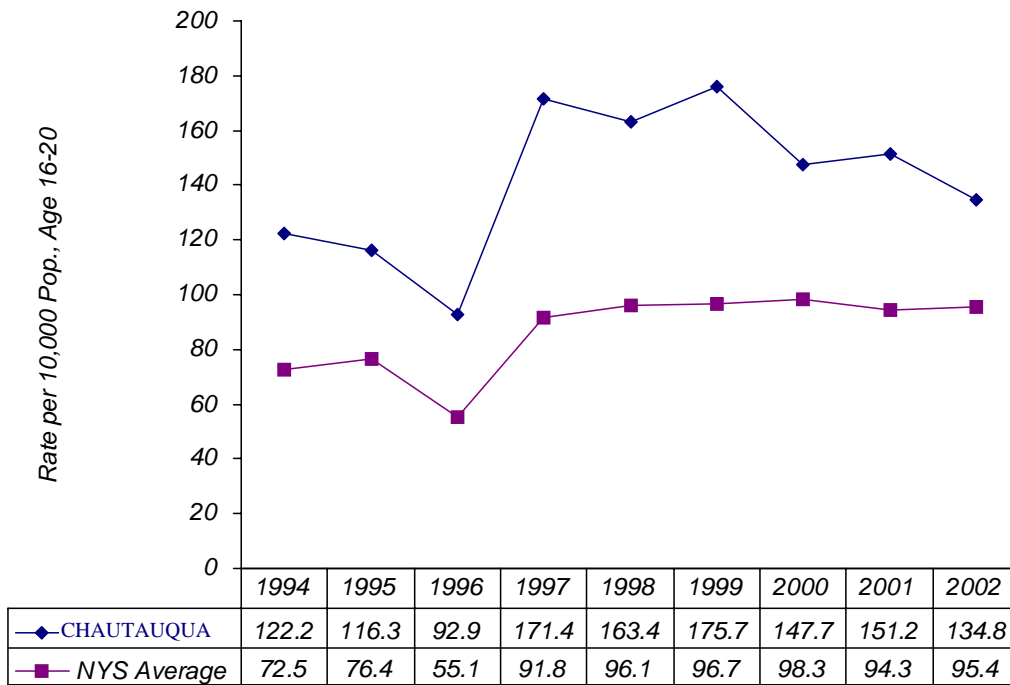
Youth Driving While Intoxicated (DWI) Arrests



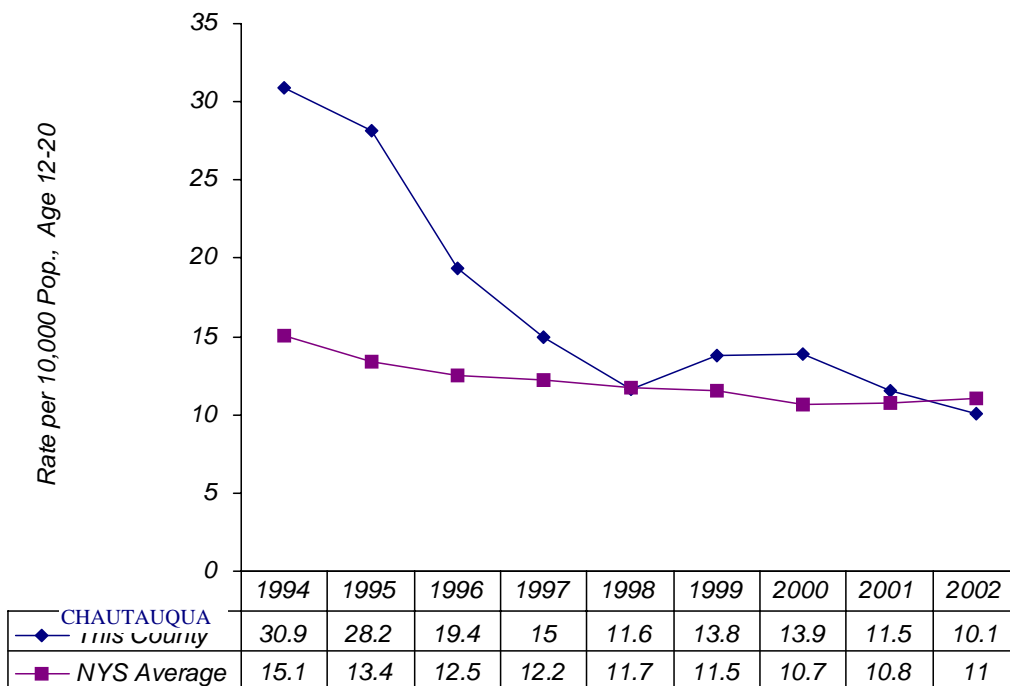
Youth Probation Cases: Use at Offense - Alcohol



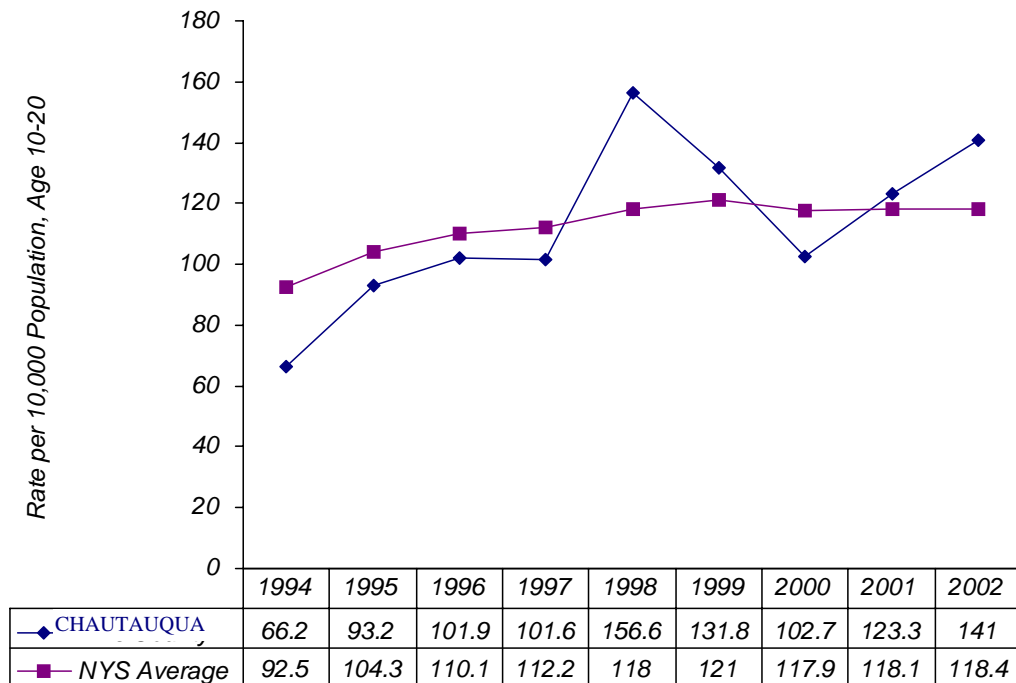
Youth Probation Cases: Court Mandates - Alcohol



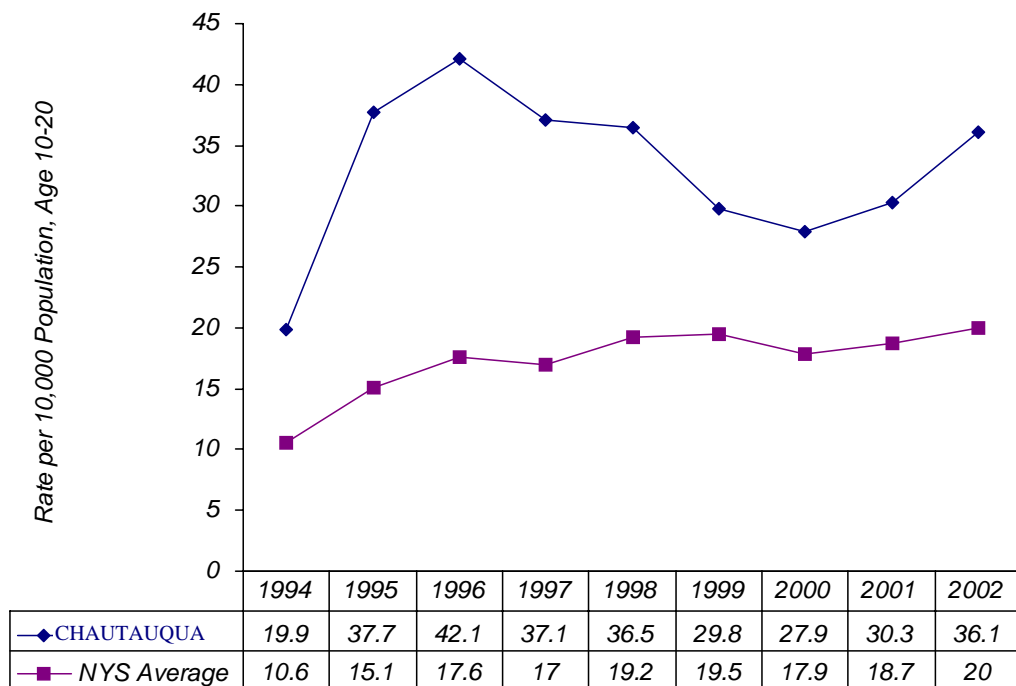
Youth OASAS Alcohol Treatment



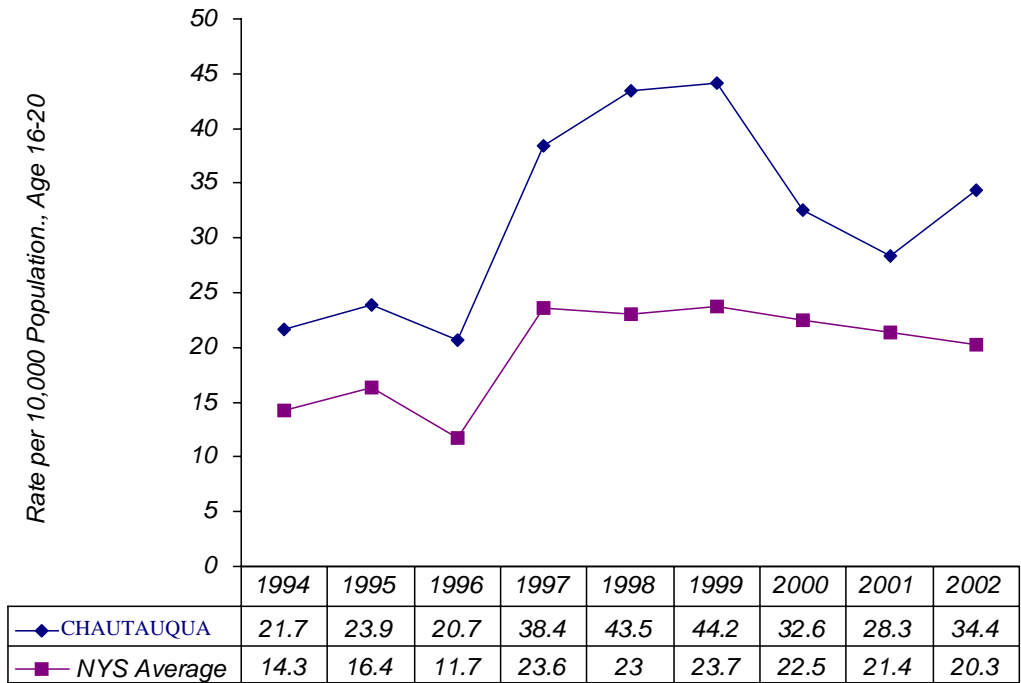
Youth Drug Arrests



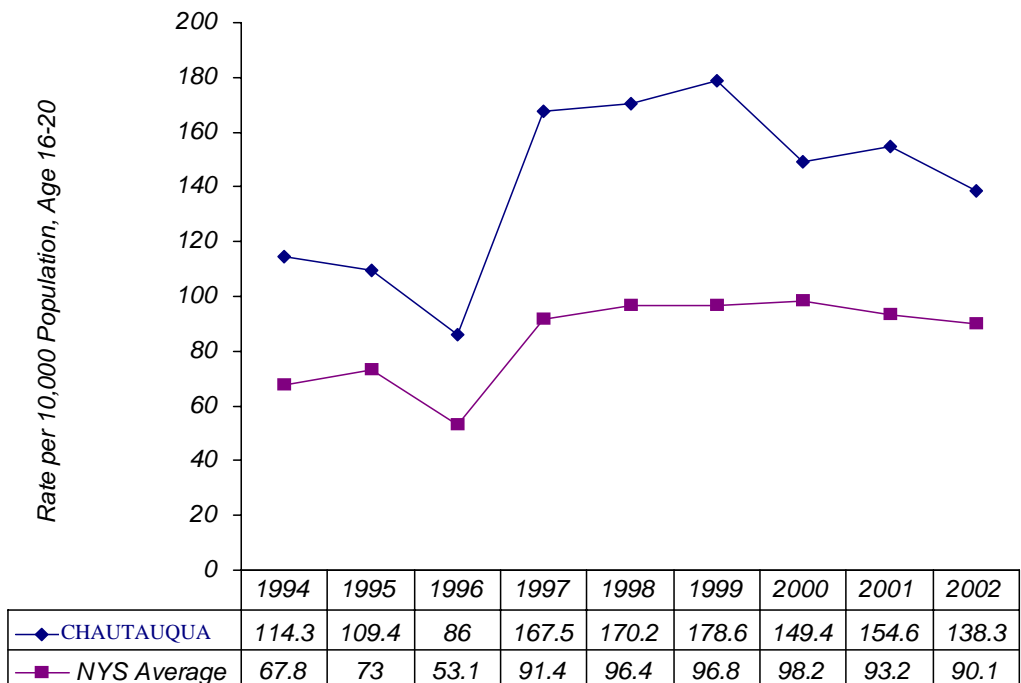
Youth Drug-Related Hospital Diagnoses



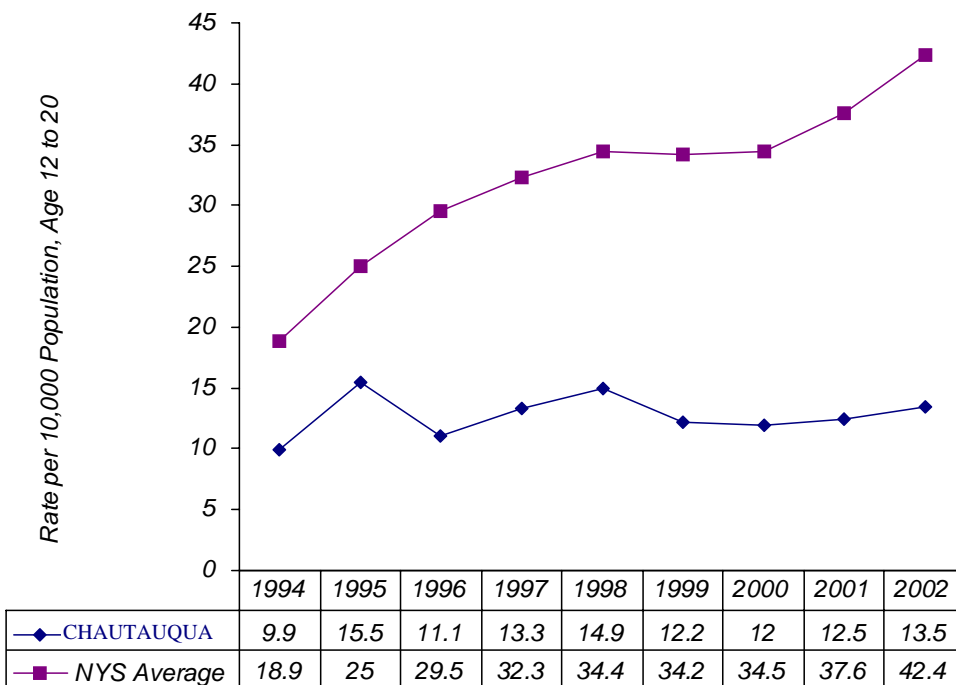
Youth Probation Cases: Use at Offense - Drugs



Youth Probation Cases: Court Mandates - Drugs



Youth OASAS Drug Treatment



Y
O
U
T
H

A
S
A

C
O
N
S
E
Q
U
E
N
C
E
S



Limitations to the PRISMS Profiles and Indicator-Based Needs Assessment

While the PRISMS Profiles provide New York State counties with important youth chemical dependency risk information, indicator-based need assessment has limitations that need to be recognized and addressed. Please keep in mind the following limitations. At the end of each caveat, there are suggested complementary methodologies to compensate for the limitations of indicator-based needs assessment approaches.

- ◆ The PRISMS County Risk Profiles assess only *risk* factors for chemical dependence among youth. Indicators that measure *protective* factors are, for the most part, unavailable. Counties with high levels of risk may not experience greater youth consequences due to the mediating effect of protective factors. Local need assessment should take into account protective factors, including OASAS funded prevention programming and resources.
- ◆ Since county-level indicators cannot capture sub-county statistical variation, the PRISMS Risk Profiles cannot identify high-risk communities within counties. PRISMS can be used in conjunction with local need assessment efforts (ethnographic studies, student, household and special population surveys; and treatment needs estimates) to identify high-risk areas within counties.
- ◆ Most indicator data are produced by social service and social control agencies and reflect societal responses to youth behavior, not the behavior itself. Resource fluctuations, data reporting practices and service delivery policies can all affect indicator rates. For example, increased reports of drug conviction rates could be due to a larger police force assigned to certain areas, to periodic "busts," or to a truly higher rate. Resources and data reporting practices vary from county to county; this geographical variation in societal response to problem behaviors cannot be controlled by the PRISMS profiles. Local service system data should also be included in local need assessments.
- ◆ Relationships among indicators and constructs found at the county level do not imply a similar relationship at the individual level. Although poverty and youth drug consequences may be related at the county level; youth from poor families may not necessarily be more likely to use illicit drugs than youth from more affluent families. The relationship between certain risk factors and chemical dependence for individual youth must be ascertained through individual-level data, such as student, ethnographic, or special population surveys.
- ◆ While most prevention planning and program development takes place at the county level, the county is not the ecological unit in which chemical dependence risk and behavior usually operate. From a theoretical perspective, the individual at risk can be understood within the contexts of personal attributes, family, neighborhood, peers, friends, school, culture and various other levels of societal interface. County-level indicators are understood as aggregates arising from processes occurring in communities within the counties. County-level indicators are not direct parameters of various community processes, but are instead aggregated proxies of those parameters. The social indicator approach adopted for the PRISMS Profiles assumes that



chemical dependency risk can be aggregated to the county level. Sub-county need assessment efforts can identify these community processes which increase chemical dependency risk.

- ◆ The research studies on which the PRISMS County Risk Profiles are based use the Youth Consequences Indices to validate risk factors represented by the Community and Youth Risk Indices. While the results are very promising, a more rigorous validation using county-level survey data is highly recommended. County-level prevalence data are also needed for estimating the size of the at-risk and chemically dependent populations for need assessment purposes.
- ◆ Many of the indicators used in the PRISMS County Profiles are generated by institutions that serve the most troubled youth in the population (official responses to the most deviant behaviors or problematic conditions). Surveys of the general population are needed to learn about risk and protective factors that do not result in institutional intervention.
- ◆ Cultural and institutional forces such as the density of the tourism industry, colleges, or ASA treatment within a county may affect results and should be taken into consideration. Refined needs assessments within counties could help investigate these local effects.

For More Information

The PRISMS Profiles and related reports are available on the NYS OASAS web site: <http://www.oasas.state.ny.us>. You may also request the County Profiles and following reports from the NYS OASAS Bureau of Communications and Community Relations at (518) 485-1768, fax: (518) 485-6014, e-mail: info@oasas.state.ny.us.

- ◆ Donovan, Barry R., Ph.D., and Backus, Cheryl A. Alcohol and Other Drug Abuse Prevention Services Needs Assessment: County-Level Social Indicator Study. NYS OASAS, August, 1997.
- ◆ Dixon, A. Kathy and Amsler, Dawne E. Alcohol and Substance Abuse Prevention Needs Assessment: County-Level Social Indicator Study Literature Review, 1999 Update. NYS OASAS, February, 1999.

For more information regarding the PRISMS Profiles methodology, contact the NYS OASAS at planning@oasas.state.ny.us or (518) 485-0262.

For more information regarding OASAS prevention efforts, contact the NYS OASAS Bureau of Science/ Technology Transfer and Planning at prevention@oasas.state.ny.us or (518) 485-2132.